



DAILY NEWS UPDATES
WWW.BLE-T.ORG

Locomotive

ENGINEERS & TRAINMEN NEWS



JANUARY 2014
VOLUME 28, ISSUE 1

PUBLISHED BY THE BLET, A DIVISION OF THE RAIL CONFERENCE, INTERNATIONAL BROTHERHOOD OF TEAMSTERS

STF Teams Launched

Safety Task Force dispatched to North Dakota oil train fire, Louisiana derailment

In December, the BLET Safety Task Force (STF) dispatched two teams of responders to assist the National Transportation Safety Board with investigations following derailments in Casselton, N.D., and Keithville, La.

On December 30, a BNSF Railway grain train derailed and a train traveling in the opposite direction carrying crude oil struck the derailment and derailed. There was a significant post-crash fire, which sparked the evacuation of 2,300 residents within a five-

mile radius of the derailment site. BLET Safety Task Force responder D.B. Kenner, Division 195 (Forsyth, Mont.), represented the BLET as

part of the NTSB investigation. The wind chill factor at the accident scene was about 34 degrees below zero. Following the Casselton derailment, an NTSB accident summary reported that 400,000 of crude oil spilled, making it one of the largest rail-related oil

spills in the U.S.

Also on December 30, a Union Pacific train collided with a parked BNSF train near

Keithville, La. Multiple crew members

were injured, according to media reports. BLET

Safety Task Force responders Russell Elley, Division 197

(San Antonio, Texas)

and Timothy Dickerson, Division 216 (Tampa, Fla.) represented the BLET during the NTSB investigation.

The BLET Safety Task Force assists federal agencies in the investigation of rail accidents, helping to determine probable causes and making safety recommendations. The STF will study the accident from the viewpoint of locomotive engineers and trainmen to help determine how the accident occurred and how to prevent similar accidents from happening in the future.

The NTSB will handle release of details regarding these derailments as the on-site investigation unfolds. ©



A MASS TRANSIT SUPER BOWL

The NFL's grand finale this year is being called the "mass transit" Super Bowl. It will be played at MetLife Stadium in East Rutherford, N.J., on February 2, 2014. Fans are being encouraged to take trains to Super Bowl XLVIII — particularly New Jersey Transit and Amtrak — so it'll be up to the professional members of the Brotherhood of Locomotive Engineers and Trainmen to get everyone to and from the game in a safe and efficient manner. Here, an Amtrak Acela trainset and a NJ Transit train observe a station stop at Linden, N.J. Photo: courtesy Chase Gunnoe



BLET members to keep Health FSA plan for 2014

Members of the Brotherhood of Locomotive Engineers and Trainmen will keep their Health Flexible Spending Accounts (Health FSA) through 2014 thanks to an increased level of participation in the money-saving plan.

A negotiated benefit obtained in the 2012 National Agreement, the Health FSA allows members to use pretax dollars to pay for certain medical expenses that are not covered under any health plan (including a railroad health & welfare plan) or any other source. The plan could allow members to save hundreds

of dollars per year in taxes.

The 2012 Agreement stipulates that at least 5% of eligible engineers must participate in the Health FSA in the 2014 Plan Year or the Carriers would have the right to terminate the plan. Following the conclusion of the Open Enrollment for 2014, 8.45% of eligible BLET members had enrolled in the program. In 2015 and future Plan Years, participation levels must reach and maintain a minimum of 7.5%.

Except as noted at the end of this paragraph, members eligible for the plan include locomotive engineers and Tex-Mex train service employees covered by the

Health & Welfare portion of the most recent National Agreement, dated January 5, 2012. The national Health FSA is distinct and separate from the on-property BNSF Health FSA plan. The participation rates identified in this News Flash do not apply to BNSF engineers.

BLET National President Dennis R. Pierce thanked all BLET members who are participating in the plan and credited the efforts of the BLET's National Mobilization network and the grass-roots approach of our local officers for helping the Organization to reach the necessary participation level this year. He also en-

couraged more members to sign up for the 2015 Plan Year and beyond.

"I believe this is a good program that will help members save money," President Pierce said. "I am optimistic that participation levels will increase as members spread the word about its benefits and become more familiar with the positive aspects of the plan." ©

MEMBERS WITH QUESTIONS ABOUT THE FSA SHOULD CALL UNITED HEALTHCARE AT (888) 298-9754 OR VISIT YOUR TRACK TO HEALTH AT: WWW.YOURTRACKTOHEALTH.COM



BLET President's Message

Taking a look back at the year 2013 **pg. 2**

2014 Scholarship Directory

A dozen scholarships are available for children of BLET members **pgs. 4-6**



Please Donate

Help ailing daughter of BLET member **pg. 6**





BLET PRESIDENT'S MESSAGE BY DENNIS R. PIERCE

A LOOK BACK AT 2013

With the year 2013 now behind us, I am proud to look back at our many accomplishments during what was truly a remarkable and historic year for our Brotherhood.

Fittingly, the year drew to a close with my attendance at a Brotherhood meeting in the field. Following through on my commitment to attend as many regular Division and Town Hall meetings as possible, it was my pleasure to participate in a Town Hall meeting hosted by BNSF Divisions in Kansas City, Mo., on December 10, followed by another Town Hall meeting and retirement luncheon on December 11 hosted by the UP Divisions representing the Kansas City Hub.

I was proud to represent the National Division at these Town Hall meetings, where many of the future leaders of our Brotherhood were on hand to honor the careers of several dedicated retirees. These young Brothers and Sisters are steadily gaining the experience and wisdom necessary to take the throttle of leadership and power our Brotherhood into the next century. It was a pleasure to do my part in helping nourish the growth of our future strength, and also to recognize the contributions of the generation of members that are reaching retirement age.

The year 2013 also saw our historic 150th anniversary. It was a significant milestone not only for the BLET, but for the entire labor movement. As the oldest labor union in North America, we proudly marked our 150th anniversary on May 8, 2013, with a day-long celebration featuring 24 guest speakers and a commemorative 150th anniversary video.

It was our goal to have an industry-wide celebration that recognized not just the contributions of the Brotherhood, but more importantly the contributions of the proud members, active and retired, who are the backbone of the union. Our guest speakers in Detroit included other union Presidents, carrier officers, and regulatory agency directors.

We succeeded in creating one day in 150 years where every industry spokesperson in atten-



President Pierce at the Town Hall Meeting/Retirees Lunch in Kansas City, Mo., on December 11, 2013.

dance publicly recognized and hailed the contribution that the men and women of the BLET make to the industry, the nation's commerce, and to building a strong middle class America. From each and every speaker, we heard personal stories about the ways in which the BLET and its membership had made a difference, and are still making a difference. That to me was especially rewarding, because there is no union without the membership. To me, honoring the contributions of our Brothers and Sisters today as well as those who came before us over the past century and a half was the highlight of our anniversary celebration.

We selected Detroit as the host city for our celebration because that's where we were founded in 1863. Members who could not make it to Detroit were still included in our anniversary celebration. All active and retired members were mailed a BLET history book and a specially designed key chain to commemorate the Brotherhood's historic achievement.

This summer, we bid a fond, yet bittersweet farewell to three dedicated Brothers. Vice Presi-

dent Willard Knight, Special Representative Jim Bradford, and Special Representative and Coordinator of Education & Training Ken Kroeger retired. The National Division lost 135 years of institutional knowledge and experience when those three Brothers retired, and they are now enjoying a well-earned and much deserved retirement. Thankfully new leaders are stepping forward each day in our Brotherhood, and I am just as proud of the new Brothers and Sisters on our team today as I was over summer when we first welcomed them aboard. Our members are all benefitting from the dedication and hard work of National Vice President Rick Gibbons, Special Representative Megan Mead, and Special Representative and Coordinator of Education & Training Jason Wright, as well as Temporary Special Representatives Matt Kronyak and Kevin Sexton.

It was not all pomp and circumstance during 2013, however. Apart from the festivities, your elected BLET leadership spent much of the year fighting for safety improvements, and the two main themes throughout the year

were Positive Train Control and two-person crews.

Sadly, it often takes a major tragedy before the public at large pays attention to railroad safety. Such was the case on July 6, 2013, when a train carrying crude oil derailed in the town of Lac-Mégantic, Quebec. The resulting fireball completely engulfed the town's core and caused 47 fatalities. The train was operated by a lone employee.

In response, the BLET strongly and publicly denounced the operation of trains by a single-person crew. Working jointly with the SMART Transportation Division (former UTU), we successfully lobbied Congress to introduce sweeping legislation that would mandate by federal law that two qualified individuals are in the cab of each freight train operating in the United States.

The Safe Freight Act, H.R. 3040, was introduced by Michael Michaud (D-ME) and Chellie Pingree (D-ME) on August 2. In late November, the BLET and SMART-TD jointly lobbied on Capitol Hill to encourage more legislators to sign on as co-sponsors of the bill. That effort was followed by a BLET Mobilization

campaign, which launched a grassroots effort by active and retired BLET members, the BLET Auxiliary, and their families to encourage their legislators to sign on as co-sponsors of the Safe Freight Act.

Mere days after that effort, yet another tragedy turned nation's attention to railroad safety. On December 1, 2013, a Metro-North train derailed in The Bronx, leaving four passengers dead. In their initial findings, investigators have indicated that Positive Train Control likely would have prevented these fatalities. The BLET once again stepped into the national spotlight and demanded the immediate implementation of PTC. We also drew public attention to our Safe Freight Act and the need for two-person crews on all freight trains throughout the United States.

2013 also was a year of membership action. In June, our members at Tacoma Rail ratified a new 5-year contract agreement. In August, we successfully organized a new short line railroad — the Texas-Pacific in West Texas. In September, about 100 BLET members struck the Wheeling & Lake Erie Railway throughout Ohio and Pennsylvania.

But not everything in 2013 was good news. Our fight against inward facing cameras in locomotive cabs is just beginning, the War on Workers is continuing to rage, and our opponents are fighting tooth and nail to halt the expansion of high-speed rail.

As I look back on last year, I can say I'm proud of all we accomplished as a Brotherhood. While it is plain that we have much more difficult work in 2014 and beyond, I am optimistic about our future. Looking ahead, I am reminded of this quote from Senator Edward Kennedy: "... the work goes on, the cause endures, the hope still lives, and the dream shall never die."

In the coming months, I will utilize this column to educate and inform you on the developing issues, and to lay out the part you must play in order for our struggle to succeed.

DENNIS R. PIERCE
BLET NATIONAL PRESIDENT

66 I was proud to represent the National Division at these Town Hall meetings, where many of the future leaders of our Brotherhood were on hand to honor the careers of several dedicated retirees. 99

BLET NATIONAL DIVISION ELECTRONIC COMMUNICATIONS POLICY

Official communications between BLET members and the National Division require a hard copy of the correspondence, bearing a signature, being received by the National President to be considered an "official communication." This is to provide that the actual question(s) are addressed, and ensures that when official

interpretations are made they have reference to a specific request and can be used in future correspondence.

The volume of e-mails received makes it impossible for the National President to answer all unofficial communications. Therefore, it is the policy of the BLET that e-mails addressed to the National President will be reviewed and forwarded to

the appropriate officer or staff for a timely response; however, an e-mail message is not considered an official communication.

Moreover, anonymous e-mails and e-mails that do not provide sufficient information concerning the sender to enable National Division staff to confirm the sender's membership status will not receive any reply or acknowledgement. This poli-

cy is intended to allow the National President to be aware of the opinions and suggestions of the membership, while at the same time providing a timely response to the member's unofficial communication, if a response is necessary, without needlessly expending limited BLET resources.

ADOPTED AT CLEVELAND, OHIO ON JULY 22, 2010. ©©



GENERAL PRESIDENT'S MESSAGE BY JAMES P. HOFFA

EXTENDING LONG-TERM UNEMPLOYMENT BENEFITS IS ESSENTIAL

Congress erred in December when it approved a budget compromise that did not extend long-term unemployment benefits for some of the nation's most vulnerable citizens. Across the U.S., 1.3 million people lost their benefits on Dec. 28, and that number will grow as more people surpass the lower threshold for the program. For most, that is 26 weeks.

The problem is not with the American worker. Time and time again, men and women with middle-class dreams have stepped up and done as they were supposed to do at the workplace. Many took cuts to both their salaries and retirements and took on added responsibilities as needed. But due to the implementation of bad trade poli-

cies like NAFTA, their jobs were increasingly shifted overseas and these hard workers were left with two options — bad and worse.

The federal government needs to support hardworking Americans who are having a tough time getting back on their feet in an economy that is still unforgiving for many in the middle class.

What can't be allowed to happen is letting millions of people fall by the wayside. Besides the 1.3 million who have lost unemployment benefits already, an additional 73,000 people a week will lose benefits as well. Beyond those initially affected, there are an additional 3.6 million who will get less aid than they would if the program isn't extended.

GOP leaders in the House and Senate need to step up and do what

is right. For years, they have focused their efforts on helping corporate cronies looking for tax breaks whose companies in turn take in record profits and then sit on them and pay bonuses to their top executives. They don't create jobs.

Republicans should stop trying to divide the nation on this question of giving assistance to those still looking for work. This is a situation that knows no color, education level or income bracket. Leaving the unemployed holding the bag is not a solution that betters America.

Fraternally,

JAMES P. HOFFA
TEAMSTERS GENERAL
PRESIDENT



66 This is a situation that knows no color, education level or income bracket. 99
Leaving the unemployed holding the bag is not a solution that betters America.



SOUTHERN HOSPITALITY



SAVANNAH HOSTS BLET FOR 87TH ANNUAL SMA

The historic city of Savannah, Ga., will host the BLET and its members for the Southeastern Meeting Association's (SMA) 87th annual convention. The 2014 SMA runs from June 15-19. Guests will stay at the Westin Savannah Harbor Golf Resort and Spa. Brother D.C. Dickey, Local Chairman of Division 646, will show BLET members some true southern hospitality as Arrangements Chairman of the 2014 SMA. For hotel information, visit www.westinsavannah.com. Anyone with questions may email Brother Dickey at: darylcdickey@yahoo.com. More details regarding the 2014 SMA will be available soon! Photos: courtesy Savannah Convention & Visitors Bureau



ATTENTION RETIREES:

Information about GA-23111 Plan F

Retired BLET members are being advised of the availability of coverage in addition to Medicare for railroad employees, their dependents, parents and parents-in-law.

If you or your dependents are covered by Medicare and become confined in a hospital, Medicare Part A and Part B pay a large portion of your hospital and physician charges. However, you will still owe the hospital the Medicare Part A deductible. In addition, you will also be responsible for the Medicare Part B deductible and generally 20% of the amount Medicare approves as covered for physician charges. Depending on the nature of the medical/surgical treatment you receive, you or your dependents could be responsible for hundreds or even thousands of dollars.

Through UnitedHealthcare, you can secure coverage for a substantial portion of these expenses by enrolling in Group Policy GA-23111 Plan F regardless of your current health status.

A TWO-PAGE FLYER FROM UNITEDHEALTHCARE EXPLAINS GROUP POLICY GA-23111 PLAN F IN GREATER DETAIL:
WWW.BLE-T.ORG/PR/PDF/GA_23111_PLAN_F.PDF



2014 BLET SCHOLARSHIP DIRECTORY

Each year, the BLET National Division compiles a list of scholarship opportunities available to the children of BLET members. Numerous financial aid opportunities are published here in the 2014 BLET Scholarship Directory.

The scholarship opportunities vary widely. The following comprehensive list provides members and their families with contact information for each scholarship program. The BLET National Division does not maintain its own scholarship program, so interested parties are advised to contact the individual scholarship providers listed below for additional information.

Those aware of additional scholarship opportunities not included in this Directory are urged to contact the BLET Public Relations Department at: Bentley@ble-t.org.



THE 2014 BLET SCHOLARSHIP DIRECTORY IS AS FOLLOWS:

James R. Hoffa Memorial Scholarship

The James R. Hoffa Memorial Scholarship Fund awards scholarships annually to outstanding high school seniors. The deadline for this year's program is March 31, 2014.

Recipients are selected by an impartial committee of university admissions and financial aid directors based on academic achievement, SAT/ACT scores, character, potential and financial need. The Teamsters consider all applicants without regard to race, religion, gender, disability, or any other legally protected status.

One category of awards totals \$10,000 each. These four-year scholarships are disbursed at the rate of \$2,500 per year and are renewable annually. Other awards are one-time \$1,000 grants. These scholarships are disbursed to the college or university at the beginning of the recipient's freshman year.

Due to the highly competitive nature of the program and the large number of applicants, students should visit the Teamster website and carefully consider the criteria before submitting an application. The JRH Scholarship Fund has established some guidelines to be used by students when deciding whether or not to apply for this program. Applicants should: 1. Rank in the top 15 percent of their high school class; 2. Have, or expect to have, excellent SAT or ACT scores; and 3. Demonstrate financial need.

A FULL LIST OF SPECIFIC ELIGIBILITY REQUIREMENTS CAN BE FOUND ON THE TEAMSTER WEBSITE: TEAMSTER.ORG/BENEFITS/JRH-SCHOLARSHIP

IF YOU NEED ADDITIONAL ASSISTANCE, PLEASE CONTACT: JAMES R. HOFFA MEMORIAL SCHOLARSHIP FUND, 25 LOUISIANA AVENUE, NW, WASHINGTON, DC 20001, PHONE: (202) 624-8735, EMAIL: SCHOLARSHIP@TEAMSTER.ORG.

BLET Auxiliary and International Western Convention (IWC) Scholarships

The BLET Auxiliary and the International Western Convention (IWC) offer

\$1,000 scholarships annually to help the children of BLET and Auxiliary members realize their goals in life.

For the second year in a row, the BLET Auxiliary has two additional \$1,000 scholarships for the school year 2014-2015 to award to children of members of both the Auxiliary and BLET — the Leona A. Louis Memorial Scholarship and the John O. & Brenda Casteel Scholarship.

There are two very strict guidelines that must be met in order to be eligible for Auxiliary scholarships. Applicants must be a son or daughter of a BLET Auxiliary member and a Brotherhood of Locomotive Engineers and Trainmen member (living or deceased), with each being a member for at least two years, and who has been accepted by an accredited school for admission. (Exception: Children of a single parent who has been a BLET member for at least two years and has maintained at least two years of membership as a BLET Auxiliary Associate Member are eligible to apply for a BLET Auxiliary scholarship).

In addition to its own scholarship program, the BLET Auxiliary administers the scholarship program for the International Western Convention (IWC). One thousand dollar scholarships are available for the children and grandchildren of BLET members whose division belongs to the IWC (International Western Convention). The BLET Divisions that are eligible to participate in the IWC are located in the following states: Arizona, California, Colorado, Idaho, Montana, Minnesota, Nevada, New Mexico, North Dakota, Oregon, Utah, Washington, Wisconsin, and Wyoming. Auxiliary membership is not a requirement to apply for the IWC-Only Scholarships.

If the applicant is a graduate student or returning to school as a sophomore, junior, or senior, he or she must have a 3.0 grade point average or better to be considered. The applicant must also be accepted to an accredited school. Scholarship applications must be received by April 1, 2014, to be accepted. Late applications will not be considered. These requirements apply

to both the BLET Auxiliary scholarships as well as the IWC-only scholarships.

Auxiliary application forms are available online at: <http://www.bletauxiliary.net>, or you can link to the Auxiliary website from the BLET Website under "Departments." Please check the website for updated scholarship information and forms. In addition to the application, the Auxiliary website provides scholarship applicants with more detailed instructions on the application process.

Please remember that the applicant must have one parent who is a member of the BLET and one parent who is a member of the Auxiliary in order to apply for a BLET Auxiliary scholarship.

MAIL COMPLETED FORMS TO:

LAWANA POSS
BLET AUXILIARY NATIONAL SECRETARY
1394 BYWOOD COURT
SUWANEE, GA 30024

FOR DETAILS OR CLARIFICATION OF ELIGIBILITY CALL (770) 497-8898 OR EMAIL SISTER LAWANA AT LEWP2007@BELLSOUTH.NET.

Eastern Union Meeting Association (EUMA)

The Eastern Union Meeting Association awards several scholarships each year, ranging in value from \$1,000 to \$2,000, including memorial scholarships honoring the memories and accomplishments of Brothers Robert F. Donoghue, Robert W. Godwin and Robert T. Pentland. The scholarships are awarded based on academic excellence and financial need. Only children of BLET members (living or deceased) belonging to divisions participating in the EUMA are eligible to apply. Division must be square on the books for the child to qualify. States represented in EUMA are Connecticut, Delaware, Illinois, Indiana, Maine, Maryland, Massachusetts, Michigan, New Hampshire, New Jersey, New York, Ohio, Pennsylvania, Vermont, Washington D.C., and West Virginia.

The 2013 EUMA scholarship application and dues deadline is July 7, 2014. Send completed applications to: Jim Louis,

EUMA Vice Chairman, Conrail SAA/CSXT Northern District, GCA, 1807 Elmwood Ave., Suite #179, Buffalo, NY 14207. For more details, contact Brother Louis at: (716) 876-2303 or louisblet@verizon.net.

APPLICATIONS ARE AVAILABLE ON THE BLET WEBSITE: WWW.BLE-T.ORG/PR/PDF/EUMA_SCHOLARSHIP_APP_0113.PDF

Southwestern Convention Meeting (SWCM)

The Southwestern Convention Meeting (SWCM) awards approximately three dozen scholarships annually based on academic achievement and financial need, granting 37 awards in 2013 totaling \$26,500.

Applicants must be the child of an active, retired or deceased BLET member whose division belongs to the Southwestern Convention Meeting. Applicants must be accepted for admission to an accredited college, university or institution of higher learning. Only divisions belonging to the SWCM are eligible.

SWCM application forms can be filled out on your computer screen with the interactive PDF form available on the BLET website. Deadline is August 1, 2014. The 2014 convention begins on September 7, and Divisions must have paid their annual SWCM convention dues for applicants from their Division to be eligible.

Beginning in 2014, the SWCM Scholarship Committee created two application forms — one for incoming freshmen and one for current college students. Be sure to use the correct form when applying as incorrect applications will not be accepted.

DOWNLOAD APPLICATION INSTRUCTIONS: WWW.BLE-T.ORG/PR/SWCMSCH.ASP

APPLICATION FORM FOR INCOMING FRESHMEN:

WWW.BLE-T.ORG/PR/PDF/2014_INCOMING_FRESHMAN_APP.PDF

APPLICATION FORM FOR CURRENT

COLLEGE STUDENTS: WWW.BLE-T.ORG/PR/PDF/2014_COLLEGE_STUDENT_APP.PDF

Southeastern Meeting Association (SMA)

The Southeastern Meeting Association (SMA) Scholarship Committee awards Geiger-Brendle Scholarships each year to the children of active or retired BLET members whose divisions participate in the SMA.

Please check with your division Secretary-Treasurer to ensure that your division participates. In general, the SMA includes divisions located in states east of the Mississippi River, and south of the Ohio River and the Mason-Dixon Line. Also, Divisions must be current with their SMA dues in order for the applicant to be eligible. No fax or electronic copies of the application will be accepted.

SMA scholarship winners are usually selected and announced at the SMA's annual business meeting held during the convention. This year's SMA will be June 15-19 in Savannah, Ga. Please see your division officers for an application or for more details. Deadline this year is June 1, 2014.

APPLICATION FORMS ARE AVAILABLE HERE: WWW.BLE-T.ORG/PR/PDF/SMA_2014_SCHOLARSHIP_APP.PDF

California State Legislative Board

The BLET's CSLB will again be awarding a scholarship to a graduating high school senior who will attend a college/trade/vocational school in 2014. The applicant's parent or guardian must be a member in good standing in a BLET division represented by the CSLB.

Last year, the Board awarded a \$1,000 scholarship. Rules, applications and deadline information are available on the Board's website: www.cslb.ws.

ALL APPLICATIONS SHOULD BE MAILED TO THE CSLB HOME OFFICE ADDRESS: CALIFORNIA STATE LEGISLATIVE BOARD, BLET/IBT, 610 AUBURN RAVINE RD., SUITE C, AUBURN, CA 95603.

New for 2014! Illinois State Legislative Board

The BLET's Illinois State Legislative Board is currently accepting applications for its Don Little Memorial Scholarship Fund, which was established in 2013.

One \$1,000 and two \$500 scholarships will be awarded to applicants whose parent or guardian is a BLET member in good standing with a BLET Local Division represented by the Illinois State Legislative Board. Applicants must be 26 years of age or younger.

Brother Don Little was a locomotive engineer with Metra commuter rail in Chicago and a proud member of BLET Division 294 (Bensenville, Ill.) for 35 years. Brother Little served for more than 10 years on the Executive Committee of the Illinois State Legislative Board and always had a dream of establishing a scholarship program for the family members of fellow Brothers and Sisters who worked in Illinois. Unfortunately, Brother Little passed away before his dream was realized.

In 2013, Paul Piekarski (Chairman of the Illinois State Legislative Board) and Timothy Dunn (Secretary-Treasurer of the Board) helped make Brother Little's dream a reality.

"It is with great pleasure that we can announce that the Illinois State Legislative Board has established the first annual Don Little Memorial Scholarship Fund. Few people were more devoted to family, friends and public service than Don. Don's legacy is one of a great union Brother, husband, father, friend and colleague. This scholarship not only honors his name but

also represents what he had in his heart: an unsurpassed passion to help people who are trying to get ahead in life yet may not have the resources to accomplish their dream."

SCHOLARSHIP APPLICATIONS AND ALL ACCOMPANYING DOCUMENTS MUST BE RECEIVED BY JUNE 30, 2014. SPECIFIC ELIGIBILITY REQUIREMENTS, DETAILED INSTRUCTIONS AND APPLICATION FORMS (PDF) ARE AVAILABLE FOR DOWNLOAD FROM THE BLET NATIONAL DIVISION WEBSITE: WWW.BLE-T.ORG/PR/PDF/ILL_SLB_SCHOLARSHIP_2014.PDF

FOR QUESTIONS OR ASSISTANCE IN COMPLETING THE APPLICATION, CONTACT BROTHER DUNN AT (618) 755-4929 OR DUNNSRUN1@YAHOO.COM.

BLET Division 269

BLET Division 269 (Jamaica, Long Island, N.Y.) offers two \$500 scholarships to the children of BLET members who are already enrolled in college. Participation is limited to members of Division 269 only.

Winners are picked at random at the division's Christmas party. For details, watch your Division 269 newsletter or contact Division President John A. Kavanaugh Jr. at (631) 813-2234.

New for 2014! BLET Division 622

BLET Division 622 (Alliance, Neb.) will, for the first time, award two \$500 scholarships in 2014. Only the children of Division 622 members are eligible to apply. Scholarship winners will be chosen at random during a Division meeting in August. Applications must be received by July 31, 2014. For more specifics, please visit the Division 622 website and click on "scholarships." www.blet622.com.

APPLICATION AND INSTRUCTIONS ARE ALSO AVAILABLE FROM THE NATIONAL DIVISION WEBSITE: WWW.BLE-T.ORG/PR/PDF/DIV_622_SCHOLARSHIP_APP_2014.PDF

Midwest Rail Craft Scholarship Foundation (MWRCSF)

Thanks to the generosity and hard work of many people, including its Board of Directors, the Midwest Rail Craft Scholarship Foundation (MWRCSF) is able to help several children of railroaders each year with their educational expenses. Scholarships from the MWRCSF are available to children of railroaders from all crafts and union affiliations. Applicants must hold residence in Kansas, Missouri, Iowa, Oklahoma, Texas, Minnesota, Ne-

braska, Illinois or Arkansas.

The Foundation, established in 2004, is led by a diverse Board of Directors representing several different railroads and labor unions. The Foundation's mission "is to collectively use the generous resources of many to ensure the further education of those blessed with knowledge, but burdened with need. In addition, we strive to unite all railroads/railroad crafts throughout the Midwest in a valiant effort to give of their time and resources so the future of our children will be bright and productive."

Greg Shy, President of MWRCSF and a retired member of BLET Division 777 (Argentine, Kan.) said MWRCSF awarded \$8,000 in scholarships last year to students who are connected to the various railroad crafts throughout the Midwest.

"Our objective is to concentrate the scholarship applicants geographically in correspondence to the enormous support we have had from railroad workers in these states," Shy said. "This is a great opportunity for those railroad families in need of financial support for the higher education of their children."

The scholarships are funded through an annual golf tournament, contributions and sponsorships. This year's golf tour-

THE JAMES R. HOFFA MEMORIAL SCHOLARSHIP FUND

2014-2015

ACADEMIC YEAR SCHOLARSHIPS

For High School Seniors who are Children
or Dependents of Teamster Members

nament is slated for September 21-22, 2014.

Please use the scholarship application on the MWRCSE website. Fill it out electronically, print it, attach the proper signatures and mail it to the address provided. The deadline for receiving applications is June 15 every year. Awards are presented on a one-time basis; and winners must reapply if they wish to be considered more than once during their college career.

TO DOWNLOAD A COPY OF THE APPLICATION, AND FOR OTHER INFORMATION ABOUT THE MWRCSE, PLEASE VISIT: WWW.MWRCSE.ORG.

BR&CF Scholarship Program

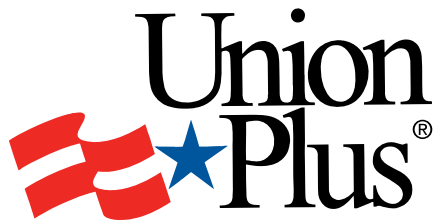
The Brotherhood's Relief and Compensation Fund (BR&CF) is pleased to provide opportunities for the sons and daughters of BR&CF members to participate in the Luther G. Smith Scholarship Program.

Children, including adopted and stepchildren, of BR&CF members who are in "Good and Regular Standing," are eligible. Applicants must be 27 years of age or younger. Applicants may be current high school students who have applied for admission as full-time students in accredited post-secondary schools or may be attending or enrolled as full-time students in accredited post-secondary schools.

International President J. M. Robb advises that 20 scholarships of \$1,000 each are awarded every year.

The BR&CF's 2014 scholarship program commenced on October 1, 2013, with applications due on March 3, 2014. The 2015 program begins October 1, 2014, with a deadline of March 2, 2015.

BR&CF MEMBERS WITH QUESTIONS MAY CONTACT LINDA GARBET AT (800) 233-7080. MEMBERS MAY OBTAIN AN APPLICATION FORM BY CALLING OR WRITING TO 2150 LINGLESTOWN ROAD, HARRISBURG, PA 17110 OR EMAILING BR&CF@BR&CF.ORG.



Union Plus Scholarships

Union Plus has recently awarded \$150,000 in scholarships to 115 students representing 36 unions in the 2013 Union Plus Scholarship Program.

Rising education costs are making it difficult for many union families to afford the cost of tuition. That's one reason Union Plus, which provides important consumer benefits to union members and retirees, offers a unique scholarship program that in just over two decades has awarded over \$3.5 million in education funding to more than 2,300 union members, spouses and dependent children. Recipients are selected based on academic ability, social awareness, financial need and appreciation of labor.

In addition to the Union Plus Scholarships, the following benefit also helps union families afford higher education:

- Discounts of 15 to 60 percent on college and graduate school test preparation courses from The Princeton Review. Discounts are available for classroom, online and private tutoring for the SAT, ACT, GMAT, LSAT, GRE and MCAT as well as college affordability and admissions online courses. Visit UnionPlus.org/CollegePrep or call (888) 243-7737.

VISIT UNIONPLUS.ORG/EDUCATION TO LEARN MORE AND APPLY FOR THE SCHOLARSHIP PROGRAM. @

Please donate to help daughter of BLET member



Above left: Vanessa Tice, right, with her younger sister.



Above right: Vanessa's high school senior photo.

The National Division of the Brotherhood of Locomotive Engineers and Trainmen is asking all members to extend a financial helping hand to a BLET member whose daughter is in need of medical assistance.

Brother Mark Tice of BLET Division 348 (Elkhart, Ind.) is a Norfolk Southern locomotive engineer. According to members of his Division, Brother Tice rarely misses work and provides well for his family. However, he is going to miss the next two weeks while he takes his daughter Vanessa, an 18-year-old high school senior, to Rhode Island to undergo treatment for CRPS — Complex Regional Pain Syndrome.

CRPS is a chronic disease characterized by severe pain, swelling, and changes in the skin. CRPS worsens over time and initially affects arms or legs before usually spreading throughout the body. It is described as one of the most painful long-term conditions.

Vanessa was born prematurely and suffers from a host of medical conditions, including epilepsy, scoliosis, and asthma. She underwent cardiothoracic

ic surgery at age 15 and was hospitalized with organ failure in June of 2011.

The Tice family has established a website detailing Vanessa's many medical issues including her fight against CRPS. The family is asking for donations to help offset the cost of travel to Rhode Island and for Vanessa's medical treatments at the Calmar Pain Relief Center. According to Brother Tice's wife Anna, the pain relief treatments are not covered by insurance. Their goal is to raise \$7,500, and thus far they have received \$5,895 in donations.

But Brother Tice and his family would like to do more than just ask for help. They want to spread the word about CRPS and to educate members about the somewhat rare disease. Please visit the BLET website for information about Complex Regional Pain Syndrome and a video about Calmar Pain Relief Center and CRPS treatment. @

TO READ MORE ABOUT VANESSA'S MEDICAL CONDITION AND TO MAKE A TAX-FREE PERSONAL DONATION, PLEASE VISIT: WWW.GOFUNDME.COM/628DXC

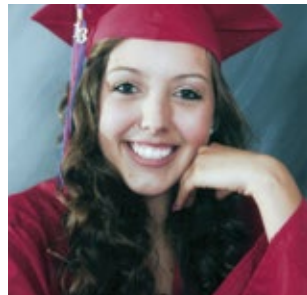
PAST SCHOLARSHIP WINNERS



AUXILIARY SCHOLARSHIP & IWC SCHOLARSHIP: MELANIE WILMESHER, daughter of James and Kay Wilmesher



JOHN O. & BRENDA CASTEEL SCHOLARSHIP: ARIEL JOHNSON, daughter of Owen and Beate Johnson.



AUXILIARY SCHOLARSHIP: MARIAH BURROLA, daughter of Oscar and Susie Burrola



AUXILIARY SCHOLARSHIP & IWC SCHOLARSHIP: ALLYSON BOOTH, daughter of James and Anne Booth



AUXILIARY SCHOLARSHIP: MARK WILLARD, son of Kenneth and Kathy Willard



AUXILIARY SCHOLARSHIP: ALEXANDER EVANS, son of James and Nancy Evans



AUXILIARY SCHOLARSHIP: KYLE WILLARD, son of Kenneth and Kathy Willard



AUXILIARY SCHOLARSHIP: KYLE RADTKE, son of James and Marme Radtke.



AUXILIARY SCHOLARSHIP: MORGAN ROSSOW, daughter of Peter and Beth Rossow

LIKE US ON FACEBOOK



LECMPA job insurance is your ticket to value.

- You receive the difference in wage if you are decertified and accept a lower paying job.
- Claim payments are deposited in your account every week.
- Payment up to your policy limits even if you sign a waiver.



(800) 514-0010
www.lecmpa.org



Transportation workers protecting each other since 1910.

BLET JOB BANK: MONTANA RAIL LINK

Montana Rail Link has contacted the BLET National Division to advise that the railroad is recruiting 10 certified locomotive engineers. Applications are being accepted through February 28, 2014. A PDF flyer announcing the job vacancies and explaining application process is available here on the BLET website: www.ble-t.org/pr/pdf/MRL_Job_Bank_Feb_2014.pdf @@



THIRD ANNUAL REPORT ON BLET EDUCATION & TRAINING FUND

When delegates attending the BLET's Second National Convention in Reno, Nevada, established a dedicated fund for Education and Training in October of 2010, they stipulated that an annual accounting of funds be published in the January issue of the BLET's newsletter.

Specifically, members pay \$1 per month to fund and maintain an BLET Education and Training Department. Section 7 (g) — National Division Rules of the BLET Bylaws (Pg. 25) reads as follows: "All members in active ser-

vice, including those holding official positions with the carrier and those employed exclusively by the BLET, shall pay \$1.00 per month dues to establish and maintain and education and training fund, subject to the provisions of Section 29 — National Division Rules. Funds received from such dues shall be used for education and training classes and/or workshops for officers and members of the BLET. A balance report outlining the disbursements from the fund will be published in the newsletter each January." @@

EDUCATION AND TRAINING FUND BALANCE REPORT FOR 2013

FUND BALANCE AT JANUARY 1, 2013			\$33,763
REVENUES			
EDUCATION AND TRAINING FUND DUES	\$382,475		
REIMBURSED EXPENDITURES	152,510		
TOTAL REVENUES		\$534,985	
EXPENDITURES			
WAGES, TAXES, AND BENEFITS	393,678		
BUSINESS TRAVEL	175,819		
MAILING EXPENSE	32,572		
MEETING EXPENSES	71,878		
TOTAL EXPENDITURES		673,947	
NET EXPENDITURES EXCEEDING REVENUES			138,962
FUND BALANCE AT DECEMBER 31, 2013			-\$105,199

SIGN UP FOR BLET NEWS FLASHES!

REGISTER AT WWW.BLE-T.ORG TO GET BROTHERHOOD NEWS EMAILED TO YOU

Stay up-to-date with the latest Brotherhood news by going to the BLET website and signing up to receive BLET News Flash alerts via email.

The News Flash alerts are news articles from the BLET National Division website that are automatically emailed to you.

TO REGISTER, JUST GO TO WWW.BLE-T.ORG. In the lower right hand corner of the page, you will find an area to

enter your email address to begin receiving the most current news from the BLET National Division.

It is a great way to keep informed on the most recent issues impacting your job, your contract and your Brotherhood.

2014

Calendar & Events

MARK YOUR CALENDARS!

BLET REGIONAL MEETINGS

June 15-19, 2014

87th Annual Southeastern Meeting Association (SMA)

SAVANNAH, GA.

Arrangements Chairman D.C. Dickey, Local Chairman of Division 646, welcomes all BLET members to beautiful Savannah, Ga., for the 2014 SMA. At the Westin Savannah Harbor Golf Resort & Spa. More details to come!

June 29-July 3, 2014

74th Annual International Western Convention (IWC)

MINNEAPOLIS, MINN.

Arrangements Chairman David K. Brown, Chairman of the Minnesota State Legislative Board and Legislative Rep. of Division 517, will host the 2014 IWC at the Hilton Minneapolis. More details to come!

August 4-8, 2014

76th Annual Eastern Union Meeting Association (EUMA)

CLEVELAND, OHIO

Arrangements Chairman Patrick Redmond, Local Chairman of Division 607, and Co-Chair James R. Blum, Legislative Rep. of Division 526, welcome all BLET members to Cleveland for the 2014 EUMA. Guests will stay at the newly-renovated Westin Downtown Cleveland, within easy walking distance of BLET National Division headquarters. More details to come!

September 7-11, 2014

79th Annual Southwestern Convention Meeting (SWCM)

ST. LOUIS, MO.

Arrangements Chairman Dave W. Grimes, Local Chairman of Division 42, will host the 2014 SWCM at the Hilton St. Louis at the Ballpark Hotel. For more information, visit the SWCM website: bletsbcm.org.



There is a difference.

Compare monthly costs.
Get the best value from the BR&CF.

Daily Benefit Level	\$100 (\$102*)	\$150	\$200 (\$201*)	Difference on \$200. With BR&CF You Save.
BR&CF	\$38.00	\$57.00	\$76.00	
LECMCA (*)	\$59.50	\$87.50	\$117.25	\$41.25 every month
UTU	\$66.00	\$99.00	\$132.00	\$56.00 every month

The BR&CF is the least expensive protection when disciplined for eligible occurrences and is committed to remaining affordable. You could save up to \$672 each year. The BR&CF offers you the best price, value and service.

The BR&CF is a not-for-profit organization with a proven track record of giving back to members and the rail labor community. The BR&CF created the North American Railway Foundation to help make things better for all of us.

**Compare apples to apples.
It's clear the BR&CF works for you.**

To apply for membership and become a part of the BR&CF... act today... ask a BR&CF member where you work for an application or visit our web site at www.brcf.org or call us toll free at

800 233-7080

LECMCA and UTU rates are accurate and effective on date of print.





Locomotive Engineers And Trainmen News Brotherhood Of Locomotive Engineers And Trainmen

A Division Of The Rail Conference,
International Brotherhood Of Teamsters

BLET Publications Committee:

Dennis R. Pierce, National President
E. "Lee" Pruitt, First Vice President & Alternate President
William C. Walpert, National Secretary-Treasurer
John P. Tolman, Vice President & National Legislative Rep.
John V. Bentley Jr., Editor
Bill Joyce, Art Director/Assistant Editor
www.ble-t.org • (216) 241-2630

COPYRIGHT 2013, ALL RIGHTS RESERVED
VOLUME 28 • NUMBER 1 • January 2014

LOCOMOTIVE ENGINEERS & TRAINMEN NEWS (ISSN 0898-8625)

is published monthly by the Brotherhood of Locomotive Engineers & Trainmen,
1370 Ontario Street, Cleveland, OH 44113-1702.
Periodicals postage paid at Cleveland, OH.

USPS: 0002-244 ISSN: 0898-8625

POSTMASTER: Send address changes to

Locomotive Engineers & Trainmen News — BLET Records Department,
1370 Ontario Street, Mezzanine Cleveland, OH 44113-1702.

Periodicals Postage
PAID
at Cleveland, OH.

1/14

Photo of the Month: January 2014

CSX POWER: CSX locomotive 3052 powers a coal train from Madisonville, Ky., to the Tennessee Valley Authority's Widows Creek Fossil Plant near Bridgeport, Ala. BLET Member Paul Zuzich, Division 129 (Nashville, Tenn.), snapped this photo just outside of Nashville on April 17, 2013.



Are you a photographer? The National Division's Public Relations Department, which produces the Newsletter each month, has received numerous inquiries lately from BLET members volunteering to contribute their

images to the "Photo of the Month" section of the Newsletter. If you'd like to submit a photo for consideration, you may call Editor John Bentley at (216) 241-2630, ext. 248, or you can email: Bentley@ble-t.org.

Please note only high resolution images can be used. Members are also encouraged to review their employer's policies regarding the use of cameras and other electronic devices while on duty.

Advisory Board October & November 2013 Activity

In accordance with the BLET Bylaws, summaries of BLET Advisory Board members' activities are published monthly:

NATIONAL PRESIDENT DENNIS R. PIERCE: National Division Office, Cleveland; General supervision of BLET activities; General office duties; Correspondence and telephone communications; Supervision of Office Administration; General Supervision of Special Representatives; President, Teamsters Rail Conference; Policy Committee, Teamsters Rail Conference; General Chairmen class, St. Louis, Mo.; UP Central GCA Local Chairmen class, Little Rock, Ark.; Metro-North mtg., New York; Long Island RR/Div. 269 retirement Dinner Dance, Hauppauge, N.Y.; Norfolk Southern GCA Local Chairmen training, Baltimore, Md.

FIRST VICE PRESIDENT E.L. (LEE) PRUITT: National Duties include but not limited to: Director, Passenger Dept.; Shortline Organizing Dept.; Trainmen's Dept.; National Publications Committee; National Legislative Board; Teamsters Rail Conference Policy Committee; PRAC; and National Negotiations; LA pool freight mtgs., Redlands, Calif.; KCS inward facing cameras, Kansas City, Mo.; GC class, St. Louis, Mo.; UP C GCA LC class, Little Rock, Ark.; Div. 398 125th anniversary, Los Angeles, Calif.; ID & NYD arbitration, Chicago; NS Trainmen training, Baltimore, Md.; NYD negotiations, Dallas; Vacation; Holiday.

NATIONAL SECRETARY-TREASURER WILLIAM C. WALPERT: General supervision of Accounting Dept., Records Dept., Online Services Dept., Tax Compliance Dept.; Education & Training Dept.; Internal Organizing, Mobilizing & Strategic Planning Dept.; Safety Task Force; Meetings with vendors and financial institutions; Publications Committee; Teamsters Rail Conference Policy Committee; Trustee, National Railroad Retirement Investment Trust (NRRIT); NS-N GCA mtg., Cleveland; Local Chairmen's Workshop, Baltimore, Md.; Pre-hearing conference with NTSB, re: Metro-North accident, Washington, D.C.; Advanced Local Chairmen's Workshop, Baltimore, Md.; NTSB public hearing, re: Metro-North accident, Washington, D.C.; Long Island RR/Div. 269 retirement Dinner Dance, Long Island, N.Y.; NS-S Local Chairmen's Workshop, Baltimore, Md.; NRRIT mtg., Washington, D.C.

VICE PRESIDENT & NATIONAL LEGISLATIVE REPRESENTATIVE JOHN P. TOLMAN: Assigned to BLET Washington, DC office; General office duties, telephone and correspondence communications; Coordinate content of NLO website; Weekly PAC committee and legislative mtgs.; Attended IBT Political Coordinators Monthly mtg.; NS Northern Lines/W&LE GCA quadrennial session, Cleveland; Congressional Hispanic Caucus Gala, Washington, D.C.; Mtg. w/ Rep. Grimm's office, Washington, D.C.; Railway Age mtg., Washington, D.C.; Rail Safety Advisory Committee working group; Full emergency RSAC; Mtg. w/ Senator Rockefeller's office, Washington, D.C.; Function for Rep. DeFazio's office, Washington, D.C.; OneRail mtg., Washington, D.C.; Mtg. w/ Rep. Andrews, Senator Whitehouse, Senator King, Senator Stabenow, and Re. Shuster's offices, Washington, D.C.; Received an award from Irish Echo, 100 Labor Leaders, New York City; Metro-North mtg., 46th annual BLET LIRR/Div. 269 Dinner Dance, Long Island, N.Y.; Mtg. at EPA re: Coal issue, Washington, D.C.; Group lobbying effort with numerous BLET SLBC, making over 150 visits and personally attending over 25 mtgs.; Mtg. w/ former Congressman Steve LaTourette; Mtg. w/ Elizabeth Harmon of IAFF, re: grant proposal, Washington, D.C.; Function for Grace Napolitano, Rep. Thompson, Senator Clarke, the Freshmen class and Frontline members, Rep. Blumenauer, Mike Capuano and Senator Murray, Washington, D.C.; Various receptions and meetings with members of U.S. House of Representatives and Senate.

VICE PRESIDENT MARCUS J. RUEF: Vice Chairman, full NRAB; Labor Member, 1st Division; Labor Member, National Mediation Board Arbitration Advisory Forum; Director of Arbitration Dept; Assigned to Illinois Central; Wisconsin Central; Elgin, Joliet & Eastern; Indiana Harbor Belt; and Belt Railway of Chicago; Special Division mtg. for IC tentative agreement, Mt. Vernon, Ill.; Assist GC Reynolds w/ discipline cases, WC, Chicago; LC workshop, Baltimore, Md.; BLE historical memorabilia mtg., Parkersburg, W.Va.; Conference call, EJ&E/WC equity issues; Advanced LC Workshop, Baltimore; Assist VP Priestester and GC Brown w/ PLB 7503 preparation, BNSF; General Chairmen workshop, St. Louis, Mo.; Ratification failure survey, WC, Chicago; UP-WL NRAB grievance mediation, Chicago; IC agreement codification, Chicago; NS GCA trainmen workshop, Baltimore, Md.; Assist GC Reynolds, WC, Section 6 mediation; Vacation; Holiday.

VICE PRESIDENT MIKE TWOMBLY: Assigned to all Union Pacific GCAs (Eastern District, Northern Region (former C&NW), Western Lines (Pacific Harbor Lines), Western Region (Portland & Western), Central Region, Southern Region; On duty at home office; General office duties, telephone, email, correspondence communications, etc.; Union Pacific Western Lines GCA Article IX Interdivisional Run negotiations, Redlands, Calif.; Tacoma Rail, Article 8, Section 1 (F), Unanticipated Service Need dispute, conference at Tacoma, Wash.; UP-Central Region grievance mediation, Chicago; UP-Western Lines GCA Article IX Interdivisional Run arbitration, Chicago; UP-Southern Region GCA, PLB 7158, Estero, Fla.; UP-Southern Region GCA, New York Dock,

Section 4 negotiations, Hurst, Texas; Utah Railway, Article 10 terminal switching dispute negotiations, Draper, Utah.

VICE PRESIDENT GIL GORE —Assigned to all CSX; Grand Trunk Western; Union Pacific-Southern Region GCA special assignment; Dispute Resolution Committee (DRC) issues, CSXT; General office duties, paperwork, correspondence, emails, telephone calls, etc.; Shared Assets negotiations, Conrail-CSX, Philadelphia; Conference call, web mtg. CSX GCs Huntington Pilot Project, 2014 neg.; Harris mtg. w/ GC Lyons, Indianapolis; Division 803 mtg., Savannah, Ga., re: Waycross relo.; Conference call, re: Inward facing cameras; Pre SSA 2014 negotiations, CSX, Jacksonville; Attendance conference call w/ CSX GCs; Conference call, re: Bombardier seniority and inward facing cameras, CSX GCs.

VICE PRESIDENT MICHAEL D. PRIESTER: Assigned to all BNSF (former ATSF, former C&S, CRI&P, FWD, former STL-SF, BNSF/MRL), Panhandle Northern, Missouri & North Arkansas, Montana Rail Link, Austin Western RR, Great Western; General office duties, telephone, email, correspondence communications, etc.; BNSF Safety Coordinators mtg., w/ GCs Wilson, Brown, Holdcraft and Thurman, Fort Worth, Texas; Texas Pacifico Section 6 negotiations, w/ GC Holdcraft, San Angelo; MRL mtgs., w/ GC Wilson, Seattle; Vacation; PLB 7503, prep. and work w/ GC Brown, Amarillo; PLB 7503 w/ GC Brown, Chicago; Mtgs. w/ Divisions 69, 202 and 695 w/ GC Wilson, BNSF, Minot, N.D.; Division 398 125th anniversary celebration w/ GC Holdcraft, Ontario, Calif.; Mtgs. w/ Divisions 446, 791 and 400, w/ GC Holdcraft, Albuquerque, N.M.; Mtgs. w/ BNSF and GC Wilson, Seattle; Division 299 mtg. (Panhandle Northern), w/ GC Holdcraft, Amarillo; Mtgs. w/ Divisions 871 and 811, w/ GC Holdcraft, Lubbock, Texas; Funeral for LC Borrego, w/ GC Holdcraft, Ontario, Calif.; Mtg. w/ Division 232 (Billings, Mont.) and w/ Division 262 (Missoula, Mont.), w/ GC Wilson, Montana Rail Link; Vacation.

VICE PRESIDENT COLE W. DAVIS: Assigned to: Kansas City Southern (MidSouth Rail, South-Rail, Gateway Western, Illinois & Midland), Texas Mexican Rwy.; CP Rail System/US (Indiana Southern, Iowa, Chicago & Eastern, Dakota, Minnesota & Eastern); Springfield Terminal (St. Lawrence & Atlantic, Montreal, Maine & Atlantic, Delaware & Hudson); Cedar River, Louisville & Indiana, Huron & Eastern; General office duties, telephone, email, correspondence communications, etc.; NS North/W&LE GCA mtg., Cleveland; KCS issues, assist GC Parker; Mid South issues, assist GC Craddock; NS North issues, assist GC Dehart; Louisville & Indiana contract, Assist GC Hartill; Tex Mex issues, assist GC Rodriguez; Springfield Terminal and D&H issues, assist GC Moore; CP Rail issues and DM&E issues, assist GC Semenek; W&LE Mediation, assist GC Dehart; Huron & Eastern issues, assist GC Barriger; Division 527 mtg., w/ GC Parker, Pittsburg, Kan.; Mtg. on KCS inward facing cameras, w/ GC Parker, Kansas City, Mo.; Division 426 mtg., w/ GC Parker, Baton Rouge, La.; Long Island RR/Div. 269 retirement dinner, Long Island, N.Y.; Mtg. w/ GC Quinn, LIRR, Long Island, N.Y.

VICE PRESIDENT STEPHEN J. BRUNO: Assigned to various Rail Safety Advisory Committees (RSAC); Regulatory duties as assigned by the President; Amtrak; Long Island Rail Road; New York & Atlantic; Metro North; New Jersey Transit; PATH; SEPTA; Metra; Union Railroad; Birmingham Southern; Telephone calls, correspondence, email, general office duties, etc.; Vacation; Numerous Metro-North meetings, Town Hall mtgs., site visit, conference calls, etc., New York; Division 11 retirement Dinner, Amtrak, Jersey City, N.J.; Assist & prep. for NJ Transit contract negotiations, Rockaway, N.J.; Mtg. w/ IBT Economist Kimball, NJT/LIRR, Philadelphia; Metra contract negotiations, Chicago; NTSB public hearing, re: Metro-North accident in Bridgeport, Conn., Washington, D.C.; Long Island RR/Div. 269 retirement Dinner Dance, Hauppauge, N.Y.; SEPTA contract negotiations mtg. w/ General Counsel Wolly, Washington, D.C.; Metra contract negotiations conference call, Philadelphia.

VICE PRESIDENT R.C. (RICK) GIBBONS: Assigned to: All Norfolk Southern General Committees; Wheeling & Lake Erie; Chicago, Fort Wayne & Eastern; New York, Susquehanna & Western; New England Central; Connecticut Southern; Western New York & Pennsylvania; Indiana & Ohio; Ohio Central; RSAC/RSIA Fatigue Management Group; General office duties, telephone, email, correspondence communications; NS North Lines/W&LE GCA mtg., Cleveland; Division 120 regular mtg., NS-North, North Kansas City, Mo.; Joint mtg. of Divisions 316, 328 and 698, NS GCA, Marietta, Ga.; NS crew management annual conference, Marietta, Ga.; SBA 1063, assist GC Dewayne Dehart/Bob Linsey, St. Louis, Mo.; SBA 1063 hearing, assist GC Dehart, Chapel Hill, N.C.; Work at BLET headquarters, Cleveland; Long Island RR/Div. 269 annual retirement Dinner Dance, Long Island, N.Y.; Mtg. w/ Divisions 79 and 234, NS-North, Columbus, Ohio; Mtg. w/ Divisions 79, 234 and 110, NS-North and NS-Southern, Columbus and Cincinnati, Ohio; NS Southern GCA Local Chairmen workshop, Baltimore, Md.; Observer Thanksgiving holiday.

JOIN US ON THE BROTHERHOOD'S NEW FACEBOOK PAGE!

The BLET National Division has been ramping up its Facebook presence since the



middle of November and all members are encouraged to log on and

check it out at www.facebook.com/BLETNational. Members will enjoy

exclusive content, breaking news, and daily updates on important issues

effecting the railroad industry and the labor movement. It's also a great place for sharing photos and keeping in touch with members throughout the country.

CHECK IT OUT! WWW.FACEBOOK.COM/BLETNATIONAL

