



Daily news updates
www.ble-t.org

Locomotive

ENGINEERS & TRAINMEN NEWS

DECEMBER
2010

PUBLISHED BY THE BLET, A DIVISION OF THE RAIL CONFERENCE, INTERNATIONAL BROTHERHOOD OF TEAMSTERS

Members elect Dennis Pierce BLET President

NST WALPERT REELECTED TO THIRD TERM, VP RUEF TO SECOND; BRIGGS ELECTED ALT. VP AND NLR

In an historic first in the 147-year history of the Brotherhood of Locomotive Engineers and Trainmen, three National Division officers and one Alternate have been elected by a direct vote by rank-and-file members.

By a 57%-43% margin, members reelected **Dennis R. Pierce** to the office of National President. He is the 23rd President in the 147-year history of the BLET and the first elected by a popular vote of all active membership.

Members also reelected National Secretary-Treasurer **William C. Walpert** to the BLET Advisory Board by a 57%-43% majority, marking Brother Walpert's third term as the BLET's top financial officer.

By a 66%-33% margin, BLET members reelected Vice President and Arbitration Director **Marcus J. Ruef** to his second term of office.

In addition, current Texas State Legislative Board Chairman **Terry D. Briggs** was elected to the office of Alternate Vice President & National Legislative Representative by a 67.5%-32.5% margin.

All were elected to four-year terms that begin on January 1, 2011.

DIRECT ELECTION OF OFFICERS

In years past, each BLET Division elected a delegate to attend the National Convention, and it was the delegates who cast their votes for the BLET's National Division officers. Due to changes to the BLET's by-laws, however, the first-ever direct election of officers by a membership-wide vote took place this year.

"This was indeed a major event in the long history



DENNIS R. PIERCE

of our proud organization," President Pierce said. "I am humbled by the support shown by thousands of BLET members, and accept the mandate they have given me to progress the organization forward in the spirit of unity and Brotherhood"

Nearly 40% of eligible BLET members cast a ballot in the first-ever membership election of National Division officers.

Brother Walpert credited the hard work of the BLET's National Mobilization Team for helping to energize BLET members and encouraging them to exercise their right to vote.

ABOUT DENNIS PIERCE

Pierce, 52, started as a union officer at the grass-roots level, working his way up through all of the levels of the Organization. He is a member of BLET Division 687 (Sioux City, Iowa) and is a BNSF locomotive engineer. He has been a BLET member since April 1, 1981.

He was elected to serve his Division as Local Chairman in 1991 and four years later was elected to the office of full time Vice General Chairman of the BNSF/MRL General Committee of Adjustment. He held that office from 1995 until elevating to the office of General Chairman in 2001. He served as General Chairman until elevating to the Advisory Board in 2008.

Pierce was promoted to the office of National Vice President on April 8, 2008. He was elected to the office of First Alternate National Vice President in June of 2006 at the BLET's First Quadrennial Convention in Las Vegas.

On December 17, 2009, the BLET Advisory Board elected President Pierce to the position of First Vice President & Alternate President, the second-highest office in the union.

He elevated to the BLET's highest office on July 1, 2010, following the retire-

ment of National President Paul T. Sorrow.

As General Chairman from 2001-2008, Pierce presided over the BLET's largest General Committee of Adjustment — the BNSF/MRL General Committee represents 3,500 members from 44 separate BLET divisions.

ABOUT BILL WALPERT

Brother Walpert was first elected General Secretary-Treasurer of the BLET on September 26, 2001, at the BLE's Fifth Quinquennial Convention in Miami. He was subsequently reelected by acclamation to the BLET's top financial office on June 19, 2006, at the BLET's First Quadrennial Convention in Las Vegas.

As General Secretary-Treasurer of the BLE, he was in charge of the BLE Finance Committee that helped merge the BLE with the International Brotherhood of Teamsters. As National Secretary-Treasurer of the BLET, he has custody of all funds of the BLET and has supervision over the financial and record department personnel of the BLET. He is under direction of the Executive Committee in regard to matters pertaining to his duties.

Brother Walpert also

CONTINUED ON PAGE 2



WILLIAM C. WALPERT



MARCUS J. RUEF



TERRY D. BRIGGS

Harvard Med School, WGBH team with BLET on fatigue project

The Brotherhood of Locomotive Engineers and Trainmen is working in conjunction with Harvard Medical School, the WGBH Educational Foundation, and the United Transportation Union to create a website for railroaders that provides them with practical information about sleep, sleep disorders and fatigue management.

Experts from the Division of Sleep Medicine at Harvard Medical School and media producers

from the WGBH Educational Foundation are developing an educational website for BLET and UTU members and other railroaders. They are seeking input from BLET members in developing the site.

"The BLET wants to help these experts understand what information will be most important for you, as railroaders," BLET National President Dennis Pierce said. "I urge you to participate in the survey to help them design the best web-

site for our members."

The survey is anonymous; members will not be asked for their names or other identifying information, and it should take you no more than 15 minutes to finish.

"Please consider this message as an encouragement to complete the survey frankly," Pierce said.

The WGBH Educational Foundation is PBS' largest producer of educational web and television content, such as the science series NOVA. The website is sponsored

by the Federal Railroad Administration's Human Factors R&D Program and supported by the Office of Safety.

If you need more information concerning the survey, please contact BLET Director of Regulatory Affairs Steve Bruno (202-624-8748) or Bruno@ble-t.org, or Arthur Smith at WGBH at 617-300-3927 or arthur_smith@wgbh.org.

"Thank you for taking the time to complete this important survey," Pierce said. @@

SURVEY LINKS

Please visit the following link to begin the survey:

www.zoomerang.com/Survey/WEB22BBLHSEXZA

You can find regular updates on website progress here:

sleep.med.harvard.edu/ext/railroaders/



CSX Santa Train

BLET member helps spread holiday cheer on Last Run **pg 3**

Photo Album

BLET Education and Training Department **pg 5**

Summary Annual Report

BLET Disability and Welfare Benefit Trust Fund **pg 8**

REGISTER FOR NEWS FLASH EMAIL ALERTS AT: WWW.BLE-T.ORG



BLET PRESIDENT'S MESSAGE

THANKS FOR HELPING TO MAKE HISTORY

In the days before this issue of the Locomotive Engineers and Trainmen News went to press BLET members throughout the United States did something that the members of this great Union had never done in our 147 year history — they elected their national leadership!

It has always been an honor for me to win the support of the members in an election. This time, the honor is special and humbling, because this election was the first membership election of National Division Officers.

First and foremost, I want to thank the nearly 40% of BLET Brothers and Sisters who participated in this historic event. I appreciate your support for our Brotherhood and for our democratic process, no matter which candidate received your vote.

I will work with all my energy to validate the trust that has been bestowed upon me and to honor the pride you have placed in your Union by your participation. Casting your vote in this election has also added your name to historic chain of thousands of Brothers and Sisters who preceded us in shaping our Organization.

And I want to add a special word of thanks to the several thousand members who took the time and made the sacrifice to work our national mobilization network's non-partisan "Get Out The Vote" campaign. The national membership vote we conducted last summer had only a 25% rate of return, and partic-



President Pierce at a recent meeting with John F. Murphy, Director of the Teamsters Rail Conference and International Vice President.

ipation was up by nearly 60% for the election, in no small measure because of the dedication of our mobilization volunteers.

For the Brothers and Sisters who did not cast a ballot in the election, I have to stress that membership in the BLET cannot be a spectator sport if we are to maintain and improve the wages, working conditions and safety of locomotive engineers and trainmen. One goal of my Administration is to strengthen the Union so that every member will want to participate in the participation sport called trade unionism.

It's important to remember that putting the election behind us does not mean that we've

reached the end of the story. Rather, we now move from one chapter to the next.

As we move forward, we must be mindful of the fact genuine democracy is far more than an exercise that is conducted once every four years. Once leaders have been elected, the next step in the process is for the group to unite in support of the democratically expressed will of the majority and to move forward in pursuit of our shared goals.

If we fail to do that, then our Brotherhood will come to resemble the sorry spectacle in the Congress that we read about every day, where the rule is "All politics all the time, and the people be damned."

We have some very serious challenges in the months and years ahead. Even though it is enjoying record profits, the railroad industry is attempting to capitalize on the general economic turmoil to attack our wages and our working conditions. The carriers also are looking for every possible way to de-skill or eliminate jobs through technology.

Collective bargaining is under siege on every front, and it seems that no one in a position of true power is willing to confront the excessive and expanding powers wielded by business and wealth. If ever there was a need for a strong, tough Union ready and willing to fight, it is today.

Our Brotherhood has faced similar challenges throughout its nearly century and a half of existence. And what our history teaches us is that the only way we can fight the railroads to a standstill and turn the tide in our favor is by everyone uniting and helping in the fight.

So it should come as no surprise that the core tenet of unionism — "An injury to one is an injury to all" — was coined by a Rail Labor leader. Gene Debs was right when he first uttered those words in the late 19th Century, and he's right today.

The way to preserve and improve our wages, to preserve and improve our health care and pension, to preserve and improve workplace safety, is when we all respond to that injury to one. It means becoming involved when called upon, and understanding

that our joint struggle will produce rewards for each of us.

Many times what is asked of the membership is small: attend a meeting; write a letter; call a Member of Congress; vote in an election. But if you multiply these individually small acts by 30,000 or more members, and focus that effort on a common goal, the effect on the process becomes huge.

If you let someone else fight your battles for you and don't like the outcome, the first place you should look is in the mirror. And if too many people succumb to the lure of apathy, then nothing is accomplished and no one is happy, except for those who have capitalized on that apathy for their own personal benefit.

If, on the other hand, we struggle together — shoulder to shoulder — to achieve our common goals, the power of the whole BLET will be far greater than the sum of its parts. That is how our forefathers faced down the violent anti-unionism of the past and created the foundation for what we have today.

I believe this election will prove to be a catalyst for the BLET, and that the leaders you have chosen will organize and unite the BLET membership to move forward together. I need your help to make this vision a reality, and ask that you be ready to answer the call to action when it comes.

Fraternally,

DENNIS R. PIERCE

66 If we struggle together — shoulder to shoulder — to achieve our common goals, the power of the whole BLET will be far greater than the sum of its parts. 99

MEMBERS ELECT PIERCE PRESIDENT

CONTINUED FROM PAGE 1

heads the BLET's Education & Training Department and serves as national chairman of the BLET's Safety Task Force, the rail industry's first employee-based accident investigation team. Walpert also serves as director of the BLET's Internal Organizing and Mobilizing & Strategic Planning Department.

Among his many accomplishments over the years, Brother Walpert developed the Education and Training Department, which is the model for the rail labor movement.

As National Chairman of the Safety Task Force, he has worked closely with the National Transportation Safety Board, testifying before several NTSB Public Hearings, espousing the views and positions of the organization and its members.

He also spearheaded development of the organization's first online reporting system and electronic dues collection system, simplifying the tasks for

hundreds of Division secretary-treasurers and bringing the process into the 21st Century.

Brother Walpert also developed the first National Mobilization Team, teaching the concept throughout the country. The team strategically developed several successful mobilization efforts, including two marches on Washington to express the views of BLET membership to the general public.

ABOUT MARCUS RUEF

Brother Ruef was first elected to a four-year term as BLET National Vice President at the BLET's First Quadrennial Convention in Las Vegas, in June 2006.

Appointed Director of Arbitration in April, 2009, Brother Ruef represents BLET as one of the Organization's two Labor Members of the National Railroad Adjustment Board (NRAB), where he serves as Vice Chairman of the First Division. He also assists the General Chairmen representing engineers at Amtrak, Long Island RR, New Jersey

Transit, PATH, SEPTA and Metra.

Brother Ruef's full time career with the Brotherhood began when he was hired in January, 1997 as Assistant Director of the Arbitration Department and as one of the Organization's Labor Members of the NRAB. He also spent many years serving Division 143 in Manassas, Va., as their Legislative Representative and as First Vice Chairman and Secretary Treasurer of the Virginia State Legislative Board.

Brother Ruef's railroad career began the day after his high school graduation in 1973, when he was hired by the Penn Central Railroad as a block operator. He worked in the interlocking towers on their Metropolitan Region between New Haven, Conn., and Mt. Vernon, N.Y. In 1976, he entered engine service and joined BLE Division 77 in New Haven, working essentially the same territory. He earned promotion to Locomotive Engineer in September of 1978.

He is a graduate of Cornell University's New York State School of Indus-

trial and Labor Relations with a BS in Labor Relations.

ABOUT TERRY BRIGGS

Brother Briggs has been a member of Division 530 (Commerce, Texas) since September 1, 1979. After serving as First Vice Chairman of the Texas State Legislative Board, he was elevated to the Chairman's office in October of 2001. He has held the position ever since, winning reelection in 2003 and 2007. With more than 3,400 active members, the BLET's State Legislative Board in Texas is the largest in the United States.

He has also been an active member of the BLET's National Association of State Legislative Board Chairmen (NASLBC) for many years.

Brother Briggs has frequently participated in numerous lobbying efforts on behalf of BLET members in Austin, Texas, and in Washington D.C., and has worked extensively with various regulatory agencies, including the Federal Railroad Administration (FRA). ©©



A message from Teamsters General President James P. Hoffa

Coming to the Rescue

In recent weeks we've learned the right way and the wrong way to bail out struggling industries.

The government's rescue of the auto industry looks like a success. Though only GM and Chrysler got government help, Ford benefited because it relies on the same network of suppliers. Now the Big 3 are profitable, moving into the electric car future and putting Americans back to work. Taxpayers are being repaid and there are 50,000 more automotive jobs here now than there were a year ago.

On the other hand, the Fed's bailout of the world's financial services industry — including the Republic of Korea and the Arab Banking Corp. of Bahrain — is outrageous. The Fed kept the world economy going, but it didn't solve the structural problems that nearly collapsed the economy.

But it would be wrong to oppose all government intervention because of the Federal Reserve's poor judgment. In the case of the auto industry, the government forced companies to restructure so they could create jobs for the future economy. Capital was redirected and



management was held responsible for meeting specific goals.

That's exactly what the Federal Reserve did not do when it loaned trillions of dollars to failing banks. Recently, the Fed had to reveal the ugly details of the secret emergency loans it made from 2007-10. Central bankers made no-strings-attached loans to investment firms, corporations and 35 foreign banks — but got nothing in return. The banks are still profiting from speculative trading, not investments in growing businesses.

Independent Vermont Sen. Bernie Sanders was responsible for forcing the Federal Reserve to disclose who it loaned money to. Sanders said taxpayers who loaned banks billions of dollars at a half-percent interest were repaid with credit cards that carry 25 percent interest rates.

The rescue wasn't perfect. The UAW workers sacrificed too many jobs and Midwest communities suffered from too many plant closings. The automakers should have been forced to reach explicit goals for keeping and creating jobs in America.

Still, GM has emerged from bankruptcy to a stock offering that earned the Treasury \$10 billion. The Economic Policy Institute estimates the auto rescue saved up to 3.3 million jobs and will save taxpayers up to \$515 billion over the long run.

That's a rescue the Teamsters can get behind.

James P. Hoffa

Fraternally,
JAMES P. HOFFA
TEAMSTERS GENERAL PRESIDENT

A festive Last Run for Div. 481's Stirling

Brother M.J. "Mikey" Stirling, a member of BLET Division 781 (Erwin, Tenn.), helped spread joy and Christmas cheer to thousands of children and families when he completed his Last Run as Locomotive Engineer of the 68th annual CSX Santa Train.

Brother Stirling's 37-year accident-free railroad career came to an end on November 20, 2010, as he expertly and safely piloted the historic train over the 110-mile route from Shelby, Ky. to Kingsport, Tenn.

Special guests included Naomi and Wynona Judd, the mother/daughter singing duo, but the guest of honor was none other than Santa Claus himself.

The annual train follows a 110-mile stretch in the rural mountain communities of eastern Kentucky, western Virginia and northeast Tennessee, and is one of Appalachia's most anticipated holiday traditions.

Santa himself rode in the caboose and was part of the team that distributed more than 15 tons of toys at 14 stops along the route.

Brother Stirling first joined the Brotherhood on July 1, 1974. He hired out with the Seaboard Coastline in Atlanta in 1973, and earned promotion to engineer in March of 1975. In 1984, he transferred to Division 781 and the Clinchfield district of what is now CSX.

He has worked the Santa Train for about 10 years as a volunteer for Operation Lifesaver, mostly on the ground in a crowd control capacity. This is the first time he worked it as an engineer.

"The crowds this year were the biggest I have ever seen in all my years with the Santa Train," Brother Stirling said. "We had excellent crowd control this year. Our Safety Committee on the ground did an excellent job keeping everyone safe and also making sure that everyone got something."



Left: Brakeman Louie Heaton; Brother Stirling; and Road Foreman of Engines Claude Couch. **Right:** Brother Stirling behind the throttle. See additional photo on pg. 8



He said the ground control and nice weather combined to make his last runs "one of the nicest trips I've ever had."

"It was lots of fun and no stress," he said.

He said the volunteers took extra time to visit a school for mentally challenged children along the route, making sure that each student was able to personally visit with Santa.

He also said the local radio station in Kingsport, Tenn., gave frequent updates regarding the progress of the Santa Train, and even alerted members of the public that it was Brother Stirling's Last Run.

Brother Stirling likes to say that he has "graduated," and that he has not retired — he is graduating on to other challenges and adventures in life.

"I'm too young to be old," said Brother Stirling, who retired at age 59 and 364 days.

He said he has always been proud BLET member, and thanked the Brotherhood for continually improving working conditions, benefits and pay throughout this career.

"I'm glad to have been a BLET mem-

ber for 37 years," he said. "I made \$16.37 per day when I started in the rail industry, but made \$30 a day as an engineer. We had no eye care or dental care back then, so we have better benefits now than when I started."

"The Brotherhood has been there and has always looked out for the craft. I'm proud to be a member of the BLET. I shudder to think where we would be without the Brotherhood."

One of his retirement gifts was a commemorative banner announcing his Last Run, which was signed by all members of the crew who worked the Santa Train. And while he did not get to meet the famous singers, he was presented with an autographed copy of Naomi and Wynona Judd's latest CD.

He and his wife, Wendy, have two adult sons. The couple plans to visit the United Kingdom, Scotland and Ireland in the new year, traveling aboard the Queen Mary II.

"I've always enjoyed running trains, just sitting behind the throttling and pulling trains," he said. ☺☺

2010

Calendar & Events

January 9-12, 2011

**BLET Education and Training
Department LM-2 GCA
Secretary-Treasurer Workshop**

The BLET Education & Training Department travels to San Diego, Calif., for a workshop catering to STs who file an annual LM-2 report for their GCA or Division. For details, please contact Ken Kroeger, at (216) 272-0986 or kroeger@ble-t.org

June 12-17, 2011

**84th annual Southeastern
Meeting Association
Asheville, N.C.**

DoubleTree Biltmore Hotel
Contact host chairman Dewey Brown
by phone or email: (828) 683-9371
or drbrown.blet267@yahoo.com.

August 2-7, 2011

**73rd annual Eastern
Union Meeting Association
Long Island, N.Y.**

Hyatt Regency Long Island, Hauppauge, N.Y.
Contact host chairman Jim Brown
by email: loco542@optonline.net

August 21-27, 2011

**71st annual International
Western Convention
San Luis Obispo, Calif.**

Embassy Suites Hotel-San Luis Obispo
Contact host chairman Mike Galvani by phone
or email: (805) 927-2967
or SLOBLE664@wildblue.net.

September 18-22, 2011

**76th annual Southwestern
Convention Meeting
El Paso, Texas**

Camino Real Hotel
Contact host chairman Larry Schneider
by phone or email: (915) 581-1373
or lschneider7@earthlink.net.

Electronic Communications Policy

Official communications between BLET members and the National Division require a hard copy of the correspondence, bearing a signature, being received by the National President to be considered an "official communication." This is to provide that the actual question(s) are addressed, and ensures that when official interpretations are made they have reference to a specific request and can be used in future correspondence.

The volume of e-mails received makes it impossible for the National President to answer all unofficial communications. Therefore, it is the policy of the BLET that e-mails addressed to the National President will be reviewed and forwarded to the appropriate officer or staff for a timely response; however, an e-mail message is not considered an official communication.

Moreover, anonymous e-mails and e-mails that do not provide sufficient information concerning the sender to enable National Division staff to confirm the sender's membership status will not receive any reply or acknowledgement. This policy is intended to allow the National President to be aware of the opinions and suggestions of the membership, while at the same time providing a timely response to the member's unofficial communication, if a response is necessary, without needlessly expending limited BLET resources.

**ADOPTED AT CLEVELAND, OHIO
ON JULY 22, 2010. ☺☺**

BLET Pennsylvania State Legislative Board holds quadrennial meeting

Chairman Ken Kertesz was reelected by acclamation to his third term at the Pennsylvania State Legislative Board's quadrennial meeting in Hershey, Pa., from October 25-27, 2010.

Brother Kertesz is a member of BLET Division 263 in Wilkes-Barre, Pa. He first joined the Brotherhood on January 1, 1974.

"I am humbled by the board's decision to re-elect me," Kertesz said. "And the fact that they returned me to this job by acclamation shows that I, and the rest of the board, are doing right by the membership, which is of the utmost importance."

Also elected by acclamation were First Vice Chairman Gene Imler of Division 74 (Harrisburg) and Secretary-Treasurer Dave Caniff of Division 370 (Pittsburgh).

Jim O'Neill of Division 483 (Philadelphia) was elected to his third term as Second Vice Chairman. Tim Laveing of Division 325 (Wilkesburg) was elected to his first term as Alternate Secretary-Treasurer.



Officers and delegates attending the Pennsylvania State Legislative Board meeting in Hershey, Pa. October 25-27, 2010. Seated, from left: Pete Fernandez, Dave Caniff, Gene Imler, Ken Kertesz, Jim O'Neill, and Jeff Johnson. **Standing:** Tim Laveing, George Gardner, Nick Baughman, Pete Kubatka, Don Despines, Greg Baranyay, Steve McCann, Gary Novak, Bob Francis, and Steve Gothreau.

surer Jeff Johnson of Division 71 (Philadelphia) and Pete Fernandez of Division 757 (New Castle) were elected to the Executive Committee.

National President Dennis R. Pierce addressed the delegates and gave a presentation regarding the state of the BLET. He also praised the work of the

Board and Chairman Kertesz.

"I would like to thank Chairman Kertesz and all of the members of the Pennsylvania State Legislative Board for the work they have done on the behalf of the members in Pennsylvania," President Pierce said.

First Vice President E.L. "Lee" Pruitt

and National Secretary-Treasurer William C. Walpert also attended the meeting. National Secretary-Treasurer Walpert gave a presentation regarding the BLET's finances. Vice President & National Legislative Representative John Tolman gave the attendees a legislative and political update, with a special mention of the 2010 mid-term elections, which will be held on November 2.

Also attending the meeting were BLET Coordinator of Education & Training and Special Representative Ken Kroeger; Ohio State Legislative Board Chairman and National Association of State Legislative Board Chairman Eastern Regional Chairman Tim Hanel; New Jersey State Legislative Board Chairman Matt Kronyak and New York State Legislative Board Chairman David Kearsing.

New BLET Auxiliary President Anita Caruso and Auxiliary Vice President & National Legislative Representative Serena Hogan were also in attendance.

The Pennsylvania State Legislative Board represents 1,250 members in 19 Divisions. ©©

Ballots mailed in CSX ratification votes

Ratification ballots were mailed on December 9 to over 2,400 active BLET members working for CSX Transportation to decide the fate of two proposed agreements.

One pact includes members working under the jurisdiction of the Northern Lines General Committee of Adjustment (General Chairman R.A. Finamore) and the Northern District General Committee of Adjustment (General Chairman J.P. Louis). It would set the terms and conditions for an operational consolidation involving the Consolidated B&O Eastern and Western District Rosters, and Conrail Northern District Roster, which has been sought by CSX for over a year.

The consolidated territory would be known as the North Mid-Atlantic Seniority District. The tentative agreement preserves existing prior rights seniority for all locomotive engineers, affords expanded work opportunities and retains seniority zones limiting the force assignment of engineers. It also broadens move-

ment between seniority districts and provides New York Dock protection for engineers displaced in connection with the consolidation.

The other tentative agreement, which is being voted on only by members working under the jurisdiction of the Northern District GCA, would resolve all wage and rule Section 6 notices for the current round. It provides for a transition, between now and 2014, from the current collective bargaining agreement to the Single System Agreement in effect on the remainder of the CSX property.

National President Dennis Pierce praised the efforts of those who worked to complete the tentative agreements. "I want to express my appreciation to General Chairmen Finamore and Louis and their teams for bringing a final product to the membership after more than a year of struggle, and I want to thank Vice President Gil Gore for being there to assist at crunch time," Pierce said.

"Federal law tilts the playing field heavily in the carrier's favor by permit-

ting large consolidations like these, and in mandating that one collective bargaining agreement govern the consolidated territory," Pierce added. "This was one very tough fight, and I'm proud that our team brought home tentative agreements that deserve everyone's most serious consideration."

Pierce also announced that the National Division's Department of Internal Organizing, Mobilizing and Strategic

Planning will be assisting the two General Committees in maximizing membership participation in the ratification process through a "Get Out The Vote" mobilization.

Ballots must be received by 10:00 a.m. on Monday, January 10, 2011, at which time tabulation will begin. Pursuant to federal law, failure of either tentative agreement automatically results in binding arbitration of the dispute. ©©



Transportation Workers protecting each other since 1910



4000 Town Center, Suite 1250, Southfield, MI 48075-1407
phone: 800.514.0010 | fax: 877.633.1910
email: lecempa1910@lecempa.org | web: www.lecempa.org



BLET EDUCATION AND TRAINING PHOTO ALBUM



ADVANCED LOCAL CHAIRMEN'S WORKSHOP

August 15-21, 2010
National Labor College,
Silver Spring, Md.

Front row, from left: Jason Wright, Div. 502; Harvey Benn, Div. 169; Ken Kroeger Coordinator of Education & Training & Special Representative; and William Walpert NST & Director of Education & Training. **Second row:** Kenneth White, Div. 622; and Dan Lucansky, Div. 96. **Third row:** Paul Forman, Div. 548; William Wallace, Div. 362; Jeffrey Buie Sr, Div. 482; and Randy Fannon Jr, Div. 37. **Back row:** Marcus J. Ruef, BLET Vice President & Director of Arbitration; Carl Fields BLET Coordinator Safety Task Force; and Doug Davidson, Assistant Director of Arbitration / Labor Member-NRAB. (Present but not pictured: Sereena Hogan, BLET Auxiliary National Vice President and National Legislative Representative.)

LOCAL CHAIRMEN'S WORKSHOP

October 31-November 4, 2010 National Labor College, Silver Spring, Md.



Front row, from left: Ken Kroeger Coordinator of Education & Training & Special Representative; Charles Ellison, Vice Local Chairman Div. 523; Lance Thomas, Vice Local Chairman Div. 622; Donald Hill, Local Chairman Div. 71; David Grimes, Vice Local Chairman Div. 6; and William Walpert, NST & Director of Education & Training. **Second row:** Paul Ansberry, Vice Local Chairman Div. 158; Daniel Dean, Vice Local Chairman Div. 502; Trevor Opheim, Local Chairman Div. 671; and Rick Dowdy, Vice Local Chairman Div. 362. **Back row:** Samuel Barriger, Vice Local Chairman Div. 327; Randall Zeppenfeld, Local Chairman Div. 312; Rich Hellwig, Vice Local Chairman Div. 622; Brian Farkas, Vice Local Chairman Div. 121; Mickey Wentzel, Local Chairman Div. 301; Patrick Redmond, Vice Local Chairman Div. 607; Marcus Ruef, Vice President & Arbitration Director; Brian Young, Vice Local Chairman Div. 48; Lonnie Swigert, Vice Local Chairman Div. 292; Ron Sprague, Vice Local Chairman Div. 28; Dave Sattig Jr., 1st Vice Local Chairman Div. 457; Daniel Couture, Local Chairman Div. 274; Carl Fields, Coordinator, BLET Safety Task Force; Paul Smith, Vice Local Chairman Div. 757; Doug Davidson, BLET Assistant Director of Arbitration / Labor Member-NRAB; and Michael Miranda, Local Chairman Div. 383.

SECRETARY-TREASURER'S WORKSHOP

December 12-15, 2010
Cleveland, Ohio

Front row, from left: Roger Adams, W. Va. SLB Secretary-Treasurer, Div. 124; Richard Ferguson, Local Chairman/Alt. S-T, Div. 457; Ken Kroeger, Coordinator of Education & Training & Special Representative; William Walpert, NST & Director of Education & Training; and Tim Dunn, Illinois SLB Secretary-Treasurer. **Second row:** Michael Abell, UP-NR GCA S-T; David Sattig Jr, 1st VLC/LR Div 457; and Aaron McKee, S-T, Div. 306. **Third row:** David Gore, S-T, Div. 607; Scott Carpenter, S-T, Div. 260; Christopher Eleczko, S-T, Div. 421; John Bove, S-T, Div. 269; and Kevin Sexton, Alt. S-T, Div. 269. **Fourth row:** Patrick Redmond, Vice Local Chairman, Div. 607; Ryan Besecker, S-T, Div. 259; Richard Bartela Jr, S-T, Div. 382; and Jeremy Haner, S-T, Div. 178. **Fifth row:** Laurence Micol, S-T, Div. 439; Dallas Daeley, S-T, Div. 214; Louise Reich, BLET Directory of Records; and Dr. Elaine Reese, BLET Office of Tax Compliance, Director. **Back row:** Greg Welp, S-T, Div. 656; Mike Quintana, S-T/VLC, Div. 385; Gregory Canty, S-T, Div. 831; Scott Helms, S-T, Div. 116; and Walt Schmidt, Director of Online Services, BLET National Division.



GA-46000 lifetime maximum adjusted for 2011

Effective January 1, 2011, the lifetime maximum benefit for the Railroad Employees National Early Retirement Major Medical Benefit (also known as ERMA or GA-46000) Plan will increase from \$118,900 to \$126,200.

At the end of 2001, Labor and Management agreed on various procedures to administer the annual changes in the amount of the lifetime maximum ben-

efit under the ERMA plan. In conjunction with the formula established in 2001, a new lifetime maximum was calculated for 2011 by utilizing the October 2010 consumer price index (CPI) data for Hospital and Related Services and Physician Services.

Additionally, for individuals who have reached the lifetime maximum, the incremental maximum available is applied to eligible expenses submitted for dates of ser-

vice on or after the effective date of the new maximum. For 2011, this amount will be \$7,300.

This change will apply to all railroads and crafts participating in ERMA.

Under ERMA, covered expenses are reimbursed at 80% after a \$100 Calendar Year deductible. Eligible employees can also elect to enroll in GA-23111 Plan E which pays 70% of the 20% not covered under ERMA after a \$100 Calendar Year

deductible is satisfied (50% for non-confining mental & nervous expenses). The reimbursement coinsurance between the two plans is 94% of covered expenses. @@

IF YOU ARE UNSURE OF YOUR ELIGIBILITY FOR ERMA, YOU SHOULD CONTACT UNITEDHEALTHCARE AT 1-800-842-5252. YOU CAN ALSO VISIT: WWW.MYUHC.COM/GROUPS/RAILROADINFO.

from the vault

THE VOICES OF HOLIDAYS PAST

A LOOK BACK AT HOLIDAY MESSAGES FROM THE BROTHERHOOD'S 147-YEAR HISTORY

Brotherhood leaders have traditionally shared holiday messages with the membership throughout the long and distinguished history of our great organization. These messages of peace and good will date to 1869 — two years after the Locomotive Engineers Monthly Journal was first published.

Today's BLET members take great pride in the deep roots of our organization. And it is with deepest appreciation of our treasured past that we take a look back on holiday greetings

from years past.

The Brotherhood, founded on May 8, 1863, is the oldest labor union in the Western Hemisphere. The Journal, first published in January of 1867, is the oldest rail union publication in the world.

Today, members of the BLET Executive Committee continue this tradition in several ways, including the mailing of holiday cards, web postings, and holiday greetings in the various Brotherhood publications.



Santa Claus behind the throttle of a Canadian Pacific Railway Locomotive (circa 1930s).

35 YEARS AGO

"It's hard to believe, but another year has run out, and this is the last issue of your official newspaper to be published in 1975. We wish each and every one of you and yours a very Merry Christmas and a happy and prosperous New Year. Boy, couldn't we use one?"

— DECEMBER 1975
THE LOCOMOTIVE ENGINEER

50 YEARS AGO

"Christmas is our most profound religious holiday and one we all reverently share. It signifies to all a new birth of idealism and hope. Human failings being what they are, the observances must be repeated every year. The old traditions serve to remind us that faith and truth are constant, even if we are not."

"We cannot say anything new and would not if we could. The old greetings and prayers are the best — peace on earth, good will to men."

— DECEMBER 16, 1960
LOCOMOTIVE ENGINEER'S JOURNAL

60 YEARS AGO

"Once again we are entering upon a time of the year that is predominantly filled with great joy and happiness."

"A member of the BLE often fails to realize what a marvelous 'gift' his Brotherhood is until he is unfortunate enough to find himself in trouble. It is then he sees the BLE in action as it goes to bat for him. This job protection is a blessing that cannot be forgotten."

"As holiday bells peal out their joyous tidings, and happy families gather for Yuletide with abundance of good cheer, affection and gifts, the member of the BLE may gaze proudly at his membership card and see in it a modern miracle — a 'gift of many lifetimes' — of tremendous value to his craft and himself."

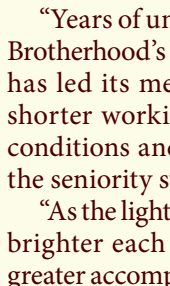
— DECEMBER 1950
LOCOMOTIVE ENGINEERS JOURNAL



Masonic Brothers: The Brotherhood's early founders had strong masonic beliefs, as evidenced by this recently uncovered photo of a BLE meeting in Illinois taken in the 1870s.

70 YEARS AGO

"Likened to starlight that has traveled long and far to illuminate a darkened world and guide the traveler safely on his way, the helpful rays of the Brotherhood, too, have traveled a long and arduous route to illuminate the hearts and homes of B. of L.E. members."



Alvanley Johnston

"Years of united effort are behind the Brotherhood's beneficial guidance which has led its members to higher wages, shorter working hours, safer working conditions and to the establishment of the seniority system."

"As the light of our Brotherhood grows brighter each year, new roads for still greater accomplishment stand revealed."

— DECEMBER 1940
LOCOMOTIVE ENGINEERS JOURNAL

85 YEARS AGO

"Perhaps old Ben Franklin was right when he said, 'A good conscience is a continual Christmas.' Such a conscience will come to the man who rejoices in Christmas as a time for giving rather than getting, for sharing rather than hoarding — for showing good will to all his fellow men."

"After all, isn't the spirit of Brotherhood the secret of a Merry Christmas?"



William B. Prenter

100 YEARS AGO

"There is strength in harmony and, in the interest of our common good, let us all join in a resolve to work for good fellowship. If we could have our way we would broaden the Christmas greetings, not with gifts but until every member of the B. of L.E. had said a kindly greeting and good wishes to every other Brother, and so cement that fellowship of our great family."

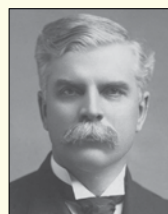
— DECEMBER 1910
LOCOMOTIVE ENGINEERS JOURNAL

110 YEARS AGO

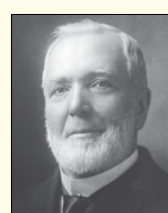
"Within the period of Christmas will come the New Year, with kindly greetings of the day and new resolves for the year. May the benign influence of Christmas day prepare our minds for resolves leading to higher moral attainments, and to that peace and fellowship, the foundation of social order, and the spirit which gives life and strength to the Brotherhood of Locomotive Engineers as an organization."

"With our duty well and faithfully done as individuals, the future of the B. of L.E. with its beneficence and benefits will be assured of advancement and perpetuation."

— DECEMBER 1900
LOCOMOTIVE ENGINEERS JOURNAL



Warren S. Stone



P.M. Arthur

125 YEARS AGO

"As we offer the right hand of fellowship through the medium of our Journal, and feel it warmly clasped by each of our Brothers in turn, we are reminded of much for which we should be thankful."

"Gladly, joyfully, then, let us as the New Year opens bend to our labor as we have never done before. There is much still to be done for our Brotherhood, collectively and individually. Let each member consider it his duty to look into the well-being of his fellowmen, giving encouragement, sympathy and admonition when it is needed."

— JANUARY 1885
Locomotive Engineers Journal

139 YEARS AGO

"Another year, with its varied changes, has passed away, and left in its train the usual measure of joy and sorrow. Another year of growth to our Order has passed away, and we would review the situation and discover wherein it has been a profit, and also point out the way to renewed prosperity."

"From a small band of half a dozen men who first started the fraternity, thousands now fill the ranks."

"From a small assembly of 37 delegates assembled at Indianapolis in 1864, the session just held in Nashville, Tenn., in 1870, numbered 120 delegates. While in 1864, the Divisions number but about 60, now we have 123."

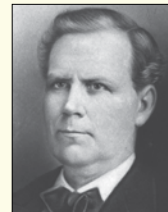
"The steady rise and growth of the Order under great difficulties is a marvel to many, but when the benefits to be derived are taken into consideration, it will be seen that time only was required to ensure its success."

— JANUARY 1871
LOCOMOTIVE ENGINEERS MONTHLY JOURNAL

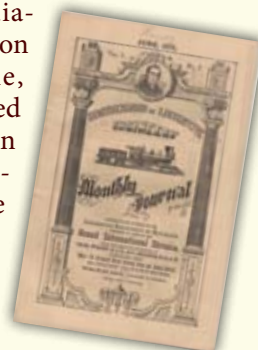
141 YEARS AGO

"Ladies and Gentlemen: In presenting you with this our first number of the Monthly Journal for the year 1869, we most respectfully wish you, one and all, a Happy New Year."

— JANUARY 1869
LOCOMOTIVE ENGINEERS MONTHLY JOURNAL



Charles Wilson





Happy Holidays from BLET Executive Committee

As the year 2010 comes to an end, the Executive Committee of the BLET extends to all BLET members and their families our sincere best wishes for a Happy Holiday season and a prosperous, safe and Happy New Year.

Railroading is without question a demanding and hazardous occupation. The BLET is making every effort to secure an increase in wages for all engineers, with improved health care benefits and an improved quality of life.

With the cost of living on the rise, and with health care premiums skyrocketing, locomotive engineers and trainmen de-

serve an equitable increase for the highly skilled, responsible and hazardous work they perform. As in the past, many obstacles have been thrown in the way of the Brotherhood's goals, and it will take the powerful, united efforts of all BLET members to attain a fair settlement.

To that end, our Mobilization network was reinvigorated in 2010. It has been tremendously helpful in boosting membership involvement on key issues throughout the year. As a loyal and devoted member, you may be called upon in the coming months to participate in a Mobilization action to assist with our efforts at the bargaining table.

As we look forward to 2011, it is our hope that with the New Year our members will continue to take a personal and active interest in the organization, so that they may continue to enjoy the many benefits provided by our Union. @@

Fraternally,

DENNIS R. PIERCE
NATIONAL PRESIDENT

E. "LEE" PRUITT
FIRST VICE PRESIDENT

WILLIAM C. WALPERT
NATIONAL SECRETARY-TREASURER



Seasons Greetings from the BLET Auxiliary!

Our railroad lives are always unpredictable, particularly during the holiday season. The children have plays and concerts to attend, decorating and shopping has to be done, cooking, baking and visiting relatives is high at the top of our priority lists.

It's time for reflection

during this special time of year, to thank those who have made our lives more enjoyable. We should put aside time to praise those who volunteer in our communities and thank the men and women in the armed forces who give up their freedom for the safety of ours.

Please accept the blessings of this season from

the National BLET Auxiliary. Remember our relatives who have passed, the soldiers who have given their lives for us and for those railroad workers who continue to keep the rails moving during the holiday season.

We wish everyone a happy, healthy and joyful holiday season. Happy New Year! @@



ANITA J. CARUSO
NATIONAL PRESIDENT



SEREENA HOGAN
NATIONAL VICE PRESIDENT/NLR



LINDA D. MAHER
NATIONAL SECRETARY



HELEN BRAND
NATIONAL TREASURER



GINA FORMAN
NATIONAL 1ST VP/NATIONAL OUTREACH COORDINATOR



KATHY HURST
NATIONAL 2ND VICE PRESIDENT/NLR



DARLA FENT
NATIONAL CHAPLAIN



LAWANA W. POSS
NATIONAL ALTERNATE SECRETARY



TERI FLEMING
NATIONAL ALTERNATE TREASURER



BECKY SCHNEIDER
NATIONAL PAST PRESIDENT

DIVISION 599 HOSTS 3RD ANNUAL CRAWFISH BOIL

BLET DIVISION 599 IN SHREVEPORT, LA., celebrated the BLET's 147 anniversary as part of their 3rd Annual Crawfish Boil on October 23, 2010.

Also participating were BLET Division 219 (Shreveport, La.), Division 326 (Bossier City, La.) and Division 632 (Minden, La.).

BLET National Vice President Gil Gore attended, along with numerous BLET General Chairmen, State Legislative Board Chairmen, and other elected officers.

More than 300 BLET members and their families participated in the event. @@



Pictured above, from left, are: BNSF General Chairman Pat Williams; BNSF General Chairman Rick Gibbons; KCS/L&A GCA 1st Vice Chairman Bud Pickett; Louisiana State Legislative Board Chairman Arlin Todd; National Vice President Gil Gore; UP General Chairman Warren Dent; Louisiana State Legislative Board 1st Vice Chairman Joe Rinchuso; and KCS/L&A General Chairman Sam Parker.

Division 267 marks 125th anniversary

Active and retired members of BLET Division 267 in Asheville, N.C., met on October 10, 2010 to celebrate a significant milestone in the history of their small Division.

Originally chartered in 1885, current members, retirees and their families met at Lake Julian Park to mark the Division's 125th anniversary.

Officers and guests in attendance included National Vice President Willard Knight, Vice General Chairman Mark Wallace (Norfolk Southern-Southern Lines), retired Vice President Paul Wingo, and retired Norfolk Southern General Chairman Ray Wallace.

After enjoying a picnic lunch, the celebration continued with a service pin ceremony for past and current members. Forty-year service pins were awarded to W.B. Bodenhamer, D.P. Brown, W.G. Galloway, J.D. Gorman, J.L. Mulkey, J.F. Ramsey, R.M. Swicegood, and R.C. Wallace.

"Division 267 has always stepped up to the call for its members and has supplied many members to key leadership positions in the organization," Local Chairman Dewey Brown said. "This local contin-



From left: John Gorman, former Local Chairman, and Ervin Laney



From left: Local Chairman Dewey Brown presenting Brother Bud Bodenhamer with a certificate and pin for 40-plus years as a member of the BLET.



Marshall Penix, winner of painting donated by BRCF

ues to look forward to the future and how to make our workplace a better and safer place for our members."

He thanked the Designated Legal Counsel firm of Steel & Moss for assistance with the event, and also thanked the following sponsors: BLET National Division; BRCF and Interna-

tional President Mark Robb; CPA Insurance and Ray and Janie Wallace; the Doubletree Biltmore Hotel; LECMPA, Ron Enos and Chad Burleson; and Merrill Lynch and Burns/Mowakowski Group.

Members of Division 267 and Local Chairman Brown will be hosting the 84th Southeastern Meeting Association in Asheville, NC from June 12-16, 2011. @@



Locomotive Engineers And Trainmen News Brotherhood Of Locomotive Engineers And Trainmen

A Division Of The Rail Conference,
International Brotherhood Of Teamsters

BLET Publications Committee:

Dennis R. Pierce, National President
E.L. "Lee" Pruitt, First Vice President & Alternate President
William C. Walpert, National Secretary-Treasurer
John P. Tolman, Vice President & National Legislative Rep.
John V. Bentley Jr., Editor
Bill Joyce, Art Director/Assistant Editor
www.ble-t.org • (216) 241-2630

COPYRIGHT 2010, ALL RIGHTS RESERVED
VOLUME 24 • NUMBER 12 • December 2010

LOCOMOTIVE ENGINEERS & TRAINMEN NEWS (ISSN 0898-8625)

is published monthly by the Brotherhood of Locomotive Engineers & Trainmen,
1370 Ontario Street, Cleveland, OH 44113-1702.
Periodicals postage paid at Cleveland, OH.

USPS: 0002-244 ISSN: 0898-8625

POSTMASTER: Send address changes to

Locomotive Engineers & Trainmen News — BLET Records Department,
1370 Ontario Street, Mezzanine Cleveland, OH 44113-1702.

Periodicals Postage
PAID
at Cleveland, OH.

12/10

68TH ANNUAL CSX SANTA TRAIN

A BLET Member Retires: The 2010 edition of the famed "Clinchfield" Santa Claus Special hustles through the north Twin Tunnel at Hill Station, Va., en route to Kingsport, Tenn. BLET member M.J. "Mikey" Stirling, Division 481 (Erwin, Tenn.), completed his Last Run as Locomotive Engineer of the Santa Train this year. For details, see Page 3 of this issue. **Photo:** copyright Ron Flanary, November 20, 2010



SUMMARY ANNUAL REPORT for BLET DISABILITY and WELFARE BENEFIT TRUST FUND

This is a summary of the annual report for the Brotherhood of Locomotive Engineers and Trainmen Disability and Welfare Benefit Trust Fund, 30-0262584/501, for 01/01/2009 through 12/31/2009. The annual report has been filed with the Employee Benefits Security Administration as required under the Employee Retirement Income Security Act of 1974 (ERISA).

The plan has a contract with Metropolitan Life Insurance Company to pay certain claims incurred under the terms of the plan. The total premiums paid for the plan year ending 12/31/2009 were \$8,303,199.

BASIC FINANCIAL STATEMENT

The value of plan assets, after subtracting liabilities of the plan, was \$4,208,793 as of 12/31/2009, compared to \$3,596,649 as of 01/01/2009. During the plan year the plan experienced an increase in its net assets of \$612,144. This increase includes unrealized appreciation or depreciation in the value of plan assets; that is, the difference between the value of the plan's assets at the end of the year and the value of the assets at the beginning of the year or the cost of assets acquired during the year. The plan had total income of \$9,335,774, including employer contributions of \$6,511,273, employee contributions of \$2,400,510, losses of \$279,754 from the sale of assets and earnings from investments of \$703,745. Plan expenses were \$8,723,630. These expenses included \$144,710 in administrative expenses, and \$8,578,920 in benefits paid to participants.

Your Rights to Additional Information

You have the right to receive a copy of the full annual report, or any part thereof, on request. The items listed below are included in that report:

1. An accountant's report;
2. Financial information and information on payments to service providers;

3. Assets held for investment;
4. Transactions in excess of 5% of plan assets; and
5. Insurance information including sales commissions paid by insurance carriers.

To obtain a copy of the full annual report, or any part thereof, write or call the office of the Brotherhood of Locomotive Engineers and Trainmen, who is Plan Administrator, at 1370 Ontario Street, Standard Building Mezzanine, Cleveland, OH, 44113-1702, (216) 241-2630. The charge to cover copying costs will be \$3.50 for the full annual report, or \$0.25 per page for any part thereof.

You also have the right to receive from the plan administrator, on request and at no charge, a statement of the assets and liabilities of the plan and accompanying notes, if any, or a statement of income and expenses of the plan and accompanying notes, if any, or both. If you request a copy of the full annual report from the plan administrator, these two statements and accompanying notes, if any, will be included as part of that report. The charge to cover copying costs given above does not include a charge for copying of these portions of the report because these portions are furnished without charge.

You also have the legally protected right to examine the annual report at the main office of the plan at 1370 Ontario Street, Standard Building Mezzanine, Cleveland, OH, 44113-1702 and at the U.S. Department of Labor in Washington DC, or obtain a copy from the U.S. Department of Labor upon payment of copying costs. Requests to the Department should be addressed to: Public Disclosure Room, Room N-1513, Employee Benefits Security Administration, U.S. Department of Labor, 200 Constitution Avenue, NW, Washington DC 20210.

Advisory Board October/November 2010 Activity

In accordance with the BLET Bylaws, summaries of BLET Advisory Board members' activities are published monthly:

NATIONAL PRESIDENT DENNIS R. PIERCE — National Division Office, Cleveland, OH; General supervision of BLET activities; General office duties; Correspondence and telephone communications; Supervision of Office Administration; General Supervision of Special Representatives; President, Teamsters Rail Conference; Policy Committee, Teamsters Rail Conference; BLET National Convention, Reno, Nevada; Meeting, BNSF CEO, Ft. Worth, Texas; Rail Labor Bargaining Coalition meetings, Washington, DC; Div. 385 regular mtg., Toledo, Ohio; Pennsylvania State Legislative Board mtg., Hershey, Pa.; Div. 42 regular mtg., St. Louis, Mo.; Kansas and Missouri State Legislative Board mtg., Kansas City, Mo.; Rail Labor Bargaining Coalition mtgs., Washington, DC; Div. 3 regular mtg., Cleveland; Div. 607 regular mtg., Cleveland; Vice President Steve Speagle, retirement dinner and Div. 155 regular mtg., Decatur, Ill.; Div. 269 retirement dinner and regular mtg., Long Island, N.Y.; SEPTA mtg., Philadelphia, Pa.; Conrail SSA mtg., Newark, N.J.; Div. 71 mtg., Philadelphia, Pa.; Div. 272 regular mtg., Dover, N.J.

FIRST VICE PRESIDENT E.L. "LEE" PRUITT — National Duties include but not limited to: Director, Passenger Dept.; Shortline Organizing Dept.; Trainmen's Dept.; National Publications Committee; National Legislative Board; Teamsters Rail Conference Policy Committee; and National Negotiations; BLET 2nd National Convention, Reno; Advisory Board mtg., Reno; National negotiations, Washington, D.C.; Pennsylvania State Legislative Board, quadrennial mtg., Hershey, Pa.; Division 42 mtg., Kansas City, Mo. Div. 189 mtg., Fort Worth, Texas; National negotiations, Washington, D.C.; UP on-property negotiations, Las Vegas; Septa cab mtg., Philadelphia; Thanksgiving holiday; Mtgs. of various Conrail Shared Assets Divisions, S. Plainfield, N.J.; Div. 272 and Div. 269 annual dinners, Stanhope, N.J.

NATIONAL SECRETARY-TREASURER WILLIAM C. WALPERT — General supervision of accounting dept., records dept., online services dept., IT Dept., tax compliance dept.; public relations dept.; Education & Training Dept.; Internal Organizing, Mobilizing & Strategic Planning Dept.; Safety Task Force; Meetings with vendors and financial institutions; Standard Building operations oversight; National Convention, Reno; Advisory Board mtgs., Reno; Pa. State Legislative Board mtg., Hershey, Pa.; Town Hall Meeting, Ft. Worth, Texas; Local Chairman's Workshop, National Labor College, Silver Spring, Md. Div. 155 mtg., Decatur, Ill.; Retirement party for retiring VP Stephen Speagle, Decatur, Ill.; Div. 601 and 235 joint Division mtg., South Plainfield, N.J.; Division 71 meeting, Philadelphia; Division 272 meeting, Stanhope, N.J.; Long Island Retirement dinner, Long Island, N.Y.

VICE PRESIDENT MERLE W. GEIGER JR. — Assigned to: Kansas City Southern; Texas Mexican Railway; Mid-South Rail; SouthRail; Gateway Western; CP Rail System/US (CP/DME/ICE); Indiana Southern RR; Utah RR; Panhandle Northern RR; Great Western RR; Indiana Harbor Belt; and Belt RR of Chicago; BLET National Convention, Reno; Advisory Board mtgs., Reno; Contract mtg., Belt RR, Chicago; SBoFA session, Tex-Mex, Dallas; PLB No. 7345, CP Rail/U.S., Chicago; PanHandle Northern contract mtgs. w/ GC Williams, Borger, Texas; Single system agreement mtgs. w/ GC Parker, Koonce, Rodriguez and KCS, Los Colinas, Texas; Advisory Board conference calls; Holidays, Research, correspondence and general office duties.

VICE PRESIDENT STEPHEN D. SPEAGLE — Assigned to Burlington Northern Santa Fe, Montana Rail Link, Pacific Harbor Line, Missouri & Northern Arkansas (M&NA); BLET national convention, Reno; Advisory Board mtgs., Reno; Mtg. w/ Dennis Pierce, John Tolman and BNSF CEO Matt Rose, Callas; Vacation; Holiday; Advisory Board conference calls; Railroad passenger conference, NMB, Philadelphia, Pa.; Division 155 mtg., Decatur, Ill.

VICE PRESIDENT & NATIONAL LEGISLATIVE REPRESENTATIVE JOHN P. TOLMAN — Assigned to BLET Washington, DC office; BLET Security Officer; General office duties, telephone, correspondence communications; Coordinate content of NLO website; BLET National Convention, Reno; Advisory Board mtgs., Reno; Mtg. w/ BNSF CEO, Dallas; Div. 385 mtg., Toledo, Ohio; Pa. State Legislative Board quadrennial mtg., Harrisburg, Pa.; Membership meetings, Boston and Manchester, N.H.; Passenger rail Advisory Cmte mtg., Washington, D.C.; Passenger rail conference, Philadelphia; Div. 155 mtg., Decatur, Ill.; Visit/mtgs. Divisions 71, 269, 272; Communications with House and Senate members on rail security and safety issues, high speed rail funding, amendment to FMLA (H.R. 5944), STB reauthorization, Hours of Surface, surface transportation program reauthorization, and a host of other bills; Attended various receptions.

VICE PRESIDENT MARCUS J. RUEF — Labor member-NRAB, Vice Chairman, First Division; Director of Arbitration Dept; Assigned to Amtrak; Southeastern Pennsylvania Transportation Authority (SEPTA); Long Island Railroad (LIRR); New York & Atlantic (NYAL); New Jersey Transit (NJT); PATH; Metra; National Division convention, Reno; Advisory Board mtgs., Reno; PLB 7377 awards adoption; Assist VP Moates w/ SSA ART 40E submission, CSX-all; Assist GC Decker, NJT, SBA 940; Assist GC Nunziato, PATH, PLB 5210; Assist GC Dent, UP-S, arbitration submissions; Assist GC Nunziato, PATH, analyzing data, re: PA-5 brake failure; Advisory Board conference calls; Annual LIRR Dinner-Dance, Div. 269, Ronkonkoma, N.Y.; LC workshop, National Labor College, Silver Spring, Md.; NMB arbitration advisory forum, Washington, D.C.; Assist GC Dayton, UP-WR, discipline issues; NMP passenger rail conference, Philadelphia; Assist VP Twombly, CN, PLB and discipline; SBA 940, NJT, Boston; Cab configuration mtgs., SEPTA, Philadelphia; Div. 269 mtg., LIRR, Babylon, N.Y.; Div. 235/601 mtg., CSX, S. Plainfield, N.J.; Div. 71 mtg., Septa, Philadelphia; Div. 272 mtg., NJT, Stanhope, N.J.; Assist GC MacArthur, UP-C&NW, claims issue; Holiday; RSIA arbitration issues w/ Mike Wolly, conf. call w/ GC, Washington, D.C.

VICE PRESIDENT MIKE TWOMBLY — Assigned to Delaware & Hudson; Springfield Terminal; St. Lawrence & Atlantic; Montreal, Maine & Atlantic; Union RR; Birmingham Southern; Huron & Eastern; Duluth, Missabe & Iron Range; DM&IR-Two Harbors; South Buffalo Rwy; Iowa, Chicago & Eastern; Indiana & Ohio; Indiana & Southern; Louisville & Indiana; Meridian Southern; Talleyrand Terminal RR; BLET National Convention, Reno; Advisory Board mtgs., Reno; Montreal Maine & Atlantic mediation, Bangor, Maine; Mtg. w/ Huron & Eastern, Vassar, Mich.; Mtg. w/ CN-GTW, Troy, Mich.; CN-EJ&E negotiations, Homewood, Ill.; CN-WC, assist GC Reynolds, Green Bay, Wisc.; Division 155 mtg., NS, Decatur, Ill.; CN-IC negotiations, Memphis, Tenn.; PLB 7444, Huron & Eastern, Indianapolis; Annual LIRR Dinner-Dance, Div. 269, Long Island, N.Y.

VICE PRESIDENT WILLARD E. KNIGHT — Assigned to: All Norfolk Southern General Committees; Wheeling & Lake Erie; Chicago, Fort Wayne & Eastern; New York, Susquehanna & Western; New England Central; Connecticut Southern; Western New York & Pennsylvania; Indiana & Ohio; General office duties; BLET National Convention, Reno; Advisory Board mtg., Reno; Division 267 celebration of 125th anniversary, Asheville, N.C.; SBA 1063, Harrisburg, Pa.; National wage team mtgs., Washington, D.C.; Ohio Central negotiations, Columbus, Ohio; NS crew mgmt. and labor relations mtgs. w/ BLET general chairmen, Atlanta, Ga.; Assisted NS VGC Thompson, preparing New York Dock claims, Imperial, Pa.; PLB 7449, Norfolk, Va.; Division 456 mtg., Norfolk, Va.; Assist GC K.S. Peek, Norfolk, Va.; Advisory Board conference call; PLB 7159 and 7238, Norfolk, Va.; Division 511 mtg., Portsmouth, Ohio.

VICE PRESIDENT GIL GORE — Assigned to all CSX; Union Pacific-Southern Region GCA special assignment; UP on-property negotiations; Dispute Resolution Committee (DRC), CSXT; National Division Convention, Reno; Advisory Board mtgs., Reno; Advisory Board conference calls; Review Sec. 4 agreement w/ President and CSXT Labor Relations; Work w/ CSXT GCs; Conference call w/ Jim Louise GCA, re: Run changes; Quarterly DRC mtg., Jacksonville, Fla.; PLB 7384, Tony Smith, CSX, Asheville, N.C.; BLET Division 3 mtg., Cleveland; PLB 7353, Matt Thornton, CSX, Jacksonville, Fla.; Mtgs. w/ CSXT, Jacksonville; DRC arbitration PLB 7265, Jacksonville; Thanksgiving holiday; Work on Sec. 4 ratification; RSIA conference call w/ CSX GCs; Office duties, paperwork, filing and calls.

VICE PRESIDENT DON MOATES — Assigned to UP-Western Lines; UP-Western Region; UP-Central Region; UP-Southern Region; UP-Eastern District; UP-Northern Region; Indiana Rail Road; Terminal Rwy-Alabama State Docks; New Orleans & Gulf Coast; Longview Switching Co.; Eastern Idaho RR; Portland & Western; National Division convention, Reno; Advisory Board mtgs., Reno; Assist BLET Western Lines GCA w/ Terminal RR-Alabama State Docks and Indiana RR; Mtgs. w/ UP officials and BLET UP GCs, re: State of the Railroad, South Morrill to Bill, Wyo; Tour of Black Thunder Coal Mine (Arch Coal, Inc.), part of Southern Powder River Basin, Gillette, Wyo.; BLET Town Hall mtgs., Divisions 187, 620, 530 and 944, Dallas; PLB 7172, UP, Denver; Mtg. w/ First VP Pruitt, six UP GCs and UP officials, on-property negotiations; BLET-CSXT Western Lines GCA, PLB 7451, preparing six cases to be presented to the First Division; General office duties, correspondence, paperwork.